

Child protection and Safeguarding



**NIGHTINGALE
SCHOOL**

Approved by:	Paul Mules Chair of Governors	Signed: <i>Paul Mules</i>
Last reviewed on:	19 th October 2022	
Next review due by:	19 th October 2023	

What Has Changed	When	Why
To ensure compliance with all legal duties, the school has adapted the model policy from The Key for school leaders. This has been personalised to meet the needs of the school and the Nightingale Code of Conduct for staff is retained.	October 2021	The new policy is fully compliant with all recent relevant legislation, including KCSIE 2021.
<p>The school has adopted the KCSIE 2022 updates on The Key for School Leaders including the addition of additional information regarding the school's response to low-level concerns. Details of these changes can be found in a separate document called '2022 CP Policy Updates' in the documents section on Governor Hub.</p> <p>There has also been an Appendix 6 added which covers Positive Handling.</p>	August 2022 ready for October 2022 ratification by Full GB.	KCSIE 2022 updates required and Positive Handling required to reflect school practice.

Contents

Important contacts	4
1. Aims	5
2. Legislation and statutory guidance	5
3. Definitions	6
4. Equality statement	5
5. Roles and responsibilities	7
6. Confidentiality	9
7. Recognising abuse and taking action.....	12
8. Online safety and the use of mobile technology.....	20
9. Notifying parents or carers	19
10. Pupils with special educational needs, disabilities or health issues	20
11. Pupils with a social worker	21
12. Looked-after and previously looked-after children	21
13. Complaints and concerns about school safeguarding policies	22
14. Record-keeping	24
15. Training	25
16. Monitoring arrangements.....	26
17. Links with other policies.....	26
Appendix 1: types of abuse	26
Appendix 2: safer recruitment and DBS checks – policy and procedures	27
Appendix 3: allegations of abuse made against staff.....	32
Appendix 4: specific safeguarding issues	39
Appendix 5: Staff Code of Conduct.....	47
Appendix 6: Positive Handling	59

Important contacts

ROLE AND ORGANISATION	NAME (20-21)	CONTACT DETAILS
Designated safeguarding lead (DSL) Nightingale	Veronica Benjamin	vbenjamin@nightingale.hackney.sch.uk 0208 985 4259
Deputy DSL Nightingale	Adam Steele	asteele@nightingale.hackney.sch.uk 0208 985 4259
School Designated Mental Health Lead	Tamanna Abedin	tabedin@nightingale.hackney.sch.uk 0208 985 4259
Headteacher Nightingale	Abigail Hopper	ahopper@nightingale.hackney.sch.uk 0208 985 4259
Designated Teacher for Looked After Children Nightingale	Veronica Benjamin	vbenjamin@nightingale.hackney.sch.uk 0208 985 4259
Local authority designated officer (LADO)	Liezel LeRoux	LADO@hackney.gov.uk 020 8356 4569.
Chair of governors Nightingale	Paul Mules	Paul.mules@db.com
School Business Manager Nightingale	Chandrika Sashidharan	csashidharan@nightingale.hackney.sch.uk 0208 985 4259
Hackney and City Multi Agency Safeguarding Hub		0208 356 5500 (also for consultation line) https://hackney.gov.uk/child-protection
Hackney Social Care		020 8356 5500 MASH@hackney.gov.uk Out of hours emergency duty team: 020 8356 2710
Channel helpline		020 7340 7264
Operation Encompass		Through Operation Encompass, the school will receive notifications when a child has witnessed or been subjected to domestic violence.

1. Aims

The school aims to ensure that:

- › Appropriate action is taken in a timely manner to safeguard and promote children's welfare
- › All staff are aware of their statutory responsibilities with respect to safeguarding
- › Staff are properly trained in recognising and reporting safeguarding issues

2. Legislation and statutory guidance

This policy is based on the Department for Education's statutory guidance Keeping Children Safe in Education (2022) and Working Together to Safeguard Children (2018), and the Governance Handbook. We comply with this guidance and the arrangements agreed and published by our 3 local safeguarding partners.

This policy is also based on the following legislation:

- › Section 175 of the Education Act 2002, which places a duty on schools and local authorities to safeguard and promote the welfare of pupils
- › The School Staffing (England) Regulations 2009, which set out what must be recorded on the single central record and the requirement for at least 1 person conducting an interview to be trained in safer recruitment techniques
- › The Children Act 1989 (and 2004 amendment), which provides a framework for the care and protection of children
- › Section 5B(11) of the Female Genital Mutilation Act 2003, as inserted by section 74 of the Serious Crime Act 2015, which places a statutory duty on teachers to report to the police where they discover that female genital mutilation (FGM) appears to have been carried out on a girl under 18
- › Statutory guidance on FGM, which sets out responsibilities with regards to safeguarding and supporting girls affected by FGM
- › The Rehabilitation of Offenders Act 1974, which outlines when people with criminal convictions can work with children
- › Schedule 4 of the Safeguarding Vulnerable Groups Act 2006, which defines what 'regulated activity' is in relation to children
- › Statutory guidance on the Prevent duty, which explains schools' duties under the Counter-Terrorism and Security Act 2015 with respect to protecting people from the risk of radicalisation and extremism
- › The Human Rights Act 1998, which explains that being subjected to harassment, violence and/or abuse, including that of a sexual nature, may breach any or all of the rights which apply to individuals under the European Convention on Human Rights (ECHR)
- › The Equality Act 2010, which makes it unlawful to discriminate against people regarding particular protected characteristics (including disability, sex, sexual orientation, gender reassignment and race). This means our governors and headteacher should carefully consider how they are supporting their pupils with regard to these characteristics. The Act allows our school to take positive action to deal with particular disadvantages affecting pupils (where we can show it's proportionate). This includes making reasonable adjustments for disabled pupils. For example, it could include taking positive action to support girls where there's evidence that they're being disproportionately subjected to sexual violence or harassment
- › The Public Sector Equality Duty (PSED), which explains that we must have due regard to eliminating unlawful discrimination, harassment and victimisation. The PSED helps us to focus on key issues of concern and how to improve pupil outcomes. Some pupils may be more at risk of harm from issues such as sexual violence; homophobic, biphobic or transphobic bullying; or racial discrimination
- › The Childcare (Disqualification) and Childcare (Early Years Provision Free of Charge) (Extended Entitlement) (Amendment) Regulations 2018 (referred to in this policy as the "2018 Childcare Disqualification Regulations") and Childcare Act 2006, which set out who is disqualified from working with children

- › This policy also meets requirements relating to safeguarding and welfare in the statutory framework for the Early Years Foundation Stage

3. Definitions

Safeguarding and promoting the welfare of children means:

- › Protecting children from maltreatment
- › Preventing impairment of children's mental and physical health or development
- › Ensuring that children grow up in circumstances consistent with the provision of safe and effective care
- › Taking action to enable all children to have the best outcomes

Child protection is part of this definition and refers to activities undertaken to prevent children suffering, or being likely to suffer, significant harm.

Abuse is a form of maltreatment of a child, and may involve inflicting harm or failing to act to prevent harm. Appendix 1 explains the different types of abuse.

Neglect is a form of abuse and is the persistent failure to meet a child's basic physical and/or psychological needs, likely to result in the serious impairment of the child's health or development. Appendix 1 defines neglect in more detail.

Sharing of nudes and semi-nudes (also known as sexting or youth produced sexual imagery) is where children share nude or semi-nude images, videos or live streams.

Children includes everyone under the age of 18.

The following 3 **safeguarding partners** are identified in Keeping Children Safe in Education (and defined in the Children Act 2004, as amended by chapter 2 of the Children and Social Work Act 2017). They will make arrangements to work together to safeguard and promote the welfare of local children, including identifying and responding to their needs:

- › The local authority (LA)
- › A clinical commissioning group for an area within the LA
- › The chief officer of police for a police area in the LA area

Victim is a widely understood and recognised term, but we understand that not everyone who has been subjected to abuse considers themselves a victim, or would want to be described that way. When managing an incident, we will be prepared to use any term that the child involved feels most comfortable with.

Alleged perpetrator(s) and **perpetrator(s)** are widely used and recognised terms. However, we will think carefully about what terminology we use (especially in front of children) as, in some cases, abusive behaviour can be harmful to the perpetrator too. We will decide what's appropriate and which terms to use on a case-by-case basis.

4. Equality statement

Some children have an increased risk of abuse, and additional barriers can exist for some children with respect to recognising or disclosing it. We are committed to anti-discriminatory practice and recognise children's diverse circumstances. We ensure that all children have the same protection, regardless of any barriers they may face.

We give special consideration to children who:

- › Have special educational needs (SEN) or disabilities or health conditions (see section 10)
- › Are young carers
- › May experience discrimination due to their race, ethnicity, religion, gender identification or sexuality
- › Have English as an additional language

- › Are known to be living in difficult situations – for example, temporary accommodation or where there are issues such as substance abuse or domestic violence
- › Are at risk of FGM, sexual exploitation, forced marriage, or radicalisation
- › Are asylum seekers
- › Are at risk due to either their own or a family member's mental health needs
- › Are looked after or previously looked after (see section 12)
- › Are missing from education
- › Whose parent/carers has expressed an intention to remove them from school to be home educated

5. Roles and responsibilities

Safeguarding and child protection is **everyone's** responsibility. This policy applies to all staff, volunteers and governors in the school and is consistent with the procedures of the 3 safeguarding partners. Our policy and procedures also apply to extended school and off-site activities.

The school plays a crucial role in preventative education. This is in the context of a whole-school approach to preparing pupils for life in modern Britain, and a culture of zero tolerance of sexism, misogyny/misandry, homophobia, biphobia and sexual violence/harassment. This will be underpinned by our:

- › Behaviour policy
- › Pastoral support system
- › Planned programme of relationships, sex and health education (RSHE), which is inclusive and delivered regularly, tackling issues such as:
 - Healthy and respectful relationships
 - Boundaries and consent
 - Stereotyping, prejudice and equality
 - Body confidence and self-esteem
 - How to recognise an abusive relationship (including coercive and controlling behaviour)
 - The concepts of, and laws relating to, sexual consent, sexual exploitation, abuse, grooming, coercion, harassment, rape, domestic abuse, so-called honour-based violence such as forced marriage and female genital mutilation (FGM) and how to access support
 - What constitutes sexual harassment and sexual violence and why they're always unacceptable

5.1 All staff

All staff will:

- › Read and understand part 1 and annex B of the Department for Education's statutory safeguarding guidance, [Keeping Children Safe in Education](#), and review this guidance at least annually.
- › All staff must acknowledge and record on SSSCPD at the beginning of each academic year to say that they have reviewed the guidance and read and understood Part 1 and Annex B. If staff do not understand any aspect of this guidance they must seek help from the Designated Safeguarding Lead.
- › Reinforce the importance of online safety when communicating with parents. This includes making parents aware of what we ask children to do online (e.g. sites they need to visit or who they'll be interacting with online)
- › Provide a safe space (access to time with school Designated Mental Health Lead in Wellbeing Office) for pupils who are LGBT to speak out and share their concerns

All staff will be aware of:

- › Our systems which support safeguarding, including this child protection and safeguarding policy, the staff Code of Conduct, the role and identity of the designated safeguarding lead (DSL) and Deputy, Behaviour Policy, Anti-Bullying Policy and the safeguarding response to children who go missing from education
- › The early help assessment process (sometimes known as the common assessment framework) and their role in it, including identifying emerging problems, liaising with the DSL, and sharing information with other professionals to support early identification and assessment
- › The process for making referrals to local authority children's social care and for statutory assessments that may follow a referral, including the role they might be expected to play
- › What to do if they identify a safeguarding issue or a child tells them they are being abused or neglected, including specific issues such as FGM, and how to maintain an appropriate level of confidentiality while liaising with relevant professionals
- › The signs of different types of abuse and neglect, as well as specific safeguarding issues, such as child-on-child abuse, child sexual exploitation (CSE), child criminal exploitation (CCE), indicators of being at risk from or involved with serious violent crime, FGM, radicalisation and serious violence (including that linked to county lines)
- › The importance of reassuring victims that they are being taken seriously and that they will be supported and kept safe
- › The fact that children can be at risk of harm inside and outside of their home, at school and online
- › The fact that children who are (or who are perceived to be) lesbian, gay, bi or trans (LGBT) can be targeted by other children
- › What to look for to identify children who need help or protection

Section 15 and appendix 4 of this policy outline in more detail how staff are supported to do this.

5.2 The designated safeguarding lead (DSL)

The DSL is a member of the senior leadership team. Our DSL is Veronica Benjamin. The DSL takes lead responsibility for child protection and wider safeguarding in the school.

During term time, the DSL will be available during school hours for staff to discuss any safeguarding concerns.

Out of school hours our DSL can be contacted via e-mail on vbenjamin@nightingale.hackney.sch.uk. However, in a Child Protection Emergency, Hackney Social Care should be contacted on:

020 8356 5500

MASH@hackney.gov.uk

Out of hours emergency duty team: 020 8356 2710

When the DSL is absent, the Deputy DSL, Adam Steele – will act as cover.

If the DSL and Deputy are not available, Chandrika Sashidharan, School Business Manager, will act as cover (for example, during out-of-hours/out-of-term activities).

The DSL will be given the time, funding, training, resources and support to:

- › Provide advice and support to other staff on child welfare and child protection matters
- › Take part in strategy discussions and inter-agency meetings and/or support other staff to do so
- › Contribute to the assessment of children
- › Refer suspected cases, as appropriate, to the relevant body (local authority children's social care, Channel programme, Disclosure and Barring Service, and/or police), and support staff who make such referrals directly

- › Have a good understanding of harmful sexual behaviour

The DSL will also:

- › Keep the headteacher informed of any issues
- › Liaise with local authority case managers and designated officers for child protection concerns as appropriate
- › Discuss the local response to sexual violence and sexual harassment with police and local authority children's social care colleagues to prepare the school's policies
- › Be confident that they know what local specialist support is available to support all children involved (including victims and alleged perpetrators) in sexual violence and sexual harassment, and be confident as to how to access this support
- › Be aware that children must have an 'appropriate adult' to support and help them in the case of a police investigation or search

The full responsibilities of the DSL and Deputy are set out in their job description.

5.3 The governing board

The governing board will:

- › Facilitate a whole-school approach to safeguarding, ensuring that safeguarding and child protection are at the forefront of, and underpin, all relevant aspects of process and policy development
- › Evaluate and approve this policy at each review, ensuring it complies with the law, and hold the headteacher to account for its implementation
- › Be aware of its obligations under the Human Rights Act 1998, the Equality Act 2010 (including the Public Sector Equality Duty), and our school's local multi-agency safeguarding arrangements
- › Appoint a senior board level (or equivalent) lead to monitor the effectiveness of this policy in conjunction with the full governing board. This is always a different person from the DSL
- › Make sure:
 - The DSL has the appropriate status and authority to carry out their job, including additional time, funding, training, resources and support
 - Online safety is a running and interrelated theme within the whole-school approach to safeguarding and related policies
 - The leadership team and relevant staff are aware of and understand the IT filters and monitoring systems in place, manage them effectively and know how to escalate concerns
 - The school has procedures to manage any safeguarding concerns (no matter how small) or allegations that do not meet the harm threshold (low-level concerns) about staff members (including supply staff, volunteers and contractors). Appendix 3 of this policy covers this procedure
 - That this policy reflects that children with SEND, or certain medical or physical health conditions, can face additional barriers to any abuse or neglect being recognised
- › Where another body is providing services or activities (regardless of whether or not the children who attend these services/activities are children on the school roll):
 - Seek assurance that the other body has appropriate safeguarding and child protection policies/procedures in place, and inspect them if needed
 - Make sure there are arrangements for the body to liaise with the school about safeguarding arrangements, where appropriate
 - Make sure that safeguarding requirements are a condition of using the school premises, and that any agreement to use the premises would be terminated if the other body fails to comply

The chair of governors will act as the 'case manager' in the event that an allegation of abuse is made against the headteacher, where appropriate (see appendix 3).

All governors will read Keeping Children Safe in Education in its entirety.

Section 15 of this policy has information on how governors are supported to fulfil their role.

5.4 The headteacher

The headteacher is responsible for the implementation of this policy, including:

- › Ensuring that staff (including temporary staff) and volunteers:
 - Are informed of our systems which support safeguarding, including this policy, as part of their induction
 - Understand and follow the procedures included in this policy, particularly those concerning referrals of cases of suspected abuse and neglect
- › Communicating this policy to parents/carers when their child joins the school and via the school website
- › Ensuring that the DSL has appropriate time, funding, training and resources, and that there is always adequate cover if the DSL is absent
- › Ensuring that all staff undertake appropriate safeguarding and child protection training, and updating the content of the training regularly
- › Acting as the 'case manager' in the event of an allegation of abuse made against another member of staff or volunteer, where appropriate (see appendix 3)
- › Making decisions regarding all low-level concerns, though they may wish to collaborate with the DSL on this
- › Ensuring the relevant staffing ratios are met, where applicable
- › Making sure each child in the Early Years Foundation Stage is assigned a key person

5.5 Virtual school heads

Virtual school heads have a non-statutory responsibility for the strategic oversight of the educational attendance, attainment and progress of pupils with a social worker.

They should also identify and engage with key professionals, e.g. DSLs, SENCOs, social workers, mental health leads and others.

6. Confidentiality

There may be occasions on which decisions regarding the sharing of information within the school and with the 3 local safeguarding partners will need to be made. Timely sharing of information is essential to effective safeguarding. The Data Protection Act (DPA) 2018 and UK GDPR do not prevent, or limit the sharing of information for the purposes of keeping children safe. If staff need to share 'special category personal data' the DPA 2018 contains 'safeguarding of children and individuals at risk' as a processing condition that allows practitioners to share information without consent if it is not possible to gain consent, it cannot be reasonably expected that a practitioner gains consent, or if you gain consent would place a child at risk. Staff should never promise a child that they will not tell anyone about a report of abuse, as this may not be in the child's best interest. If staff are in any doubt about sharing information, they should speak to the designated safeguarding lead (or deputy). If the DSL is in any doubt about sharing information they should seek advice from Hackney's safeguarding consultation line.

- › Staff should never promise a child that they will not tell anyone about a report of abuse, as this may not be in the child's best interests
- › If a victim asks the school not to tell anyone about sexual violence or sexual harassment:
 - There's no definitive answer, because even if a victim doesn't consent to sharing information, staff may still lawfully share it if there's another legal basis under the UK GDPR that applies

- The DSL will have to balance the victim's wishes against their duty to protect the victim and other children
- The DSL should consider that:
 - Parents or carers should normally be informed (unless this would put the victim at greater risk)
 - The basic safeguarding principle is: if a child is at risk of harm, is in immediate danger, or has been harmed, a referral should be made to local authority children's social care
 - Rape, assault by penetration and sexual assault are crimes. Where a report of rape, assault by penetration or sexual assault is made, this should be referred to the police. While the age of criminal responsibility is 10, if the alleged perpetrator is under 10, the starting principle of referring to the police remains
- › Regarding anonymity, all staff will:
 - Be aware of anonymity, witness support and the criminal process in general where an allegation of sexual violence or sexual harassment is progressing through the criminal justice system
 - Do all they reasonably can to protect the anonymity of any children involved in any report of sexual violence or sexual harassment, for example, carefully considering which staff should know about the report, and any support for children involved
 - Consider the potential impact of social media in facilitating the spreading of rumours and exposing victims' identities
- › The government's information sharing advice for safeguarding practitioners includes 7 'golden rules' for sharing information, and this document will support staff who have to make decisions about sharing information. The seven golden rules are as follows:
 1. Remember that the General Data Protection Regulation (GDPR), Data Protection Act 2018 and human rights law are not barriers to justified information sharing, but provide a framework to ensure that personal information about living individuals is shared appropriately.
 2. Be open and honest with the individual (and/or their family where appropriate) from the outset about why, what, how and with whom information will, or could be shared, and seek their agreement, unless it is unsafe or inappropriate to do so.
 3. Seek advice from other practitioners, or your information governance lead, if you are in any doubt about sharing the information concerned, without disclosing the identity of the individual where possible.
 4. Where possible, share information with consent, and where possible, respect the wishes of those who do not consent to having their information shared. Under the GDPR and Data Protection Act 2018 you may share information without consent if, in your judgement, there is a lawful basis to do so, such as where safety may be at risk. You will need to base your judgement on the facts of the case. When you are sharing or requesting personal information from someone, be clear of the basis upon which you are doing so. Where you do not have consent, be mindful that an individual might not expect information to be shared.
 5. Consider safety and well-being: base your information sharing decisions on considerations of the safety and well-being of the individual and others who may be affected by their actions.
 6. Necessary, proportionate, relevant, adequate, accurate, timely and secure: ensure that the information you share is necessary for the purpose for which you are sharing it, is shared only with those individuals who need to have it, is accurate and up-to-date, is shared in a timely fashion, and is shared securely (see principles).
 7. Keep a record of your decision and the reasons for it – whether it is to share information or not. If you decide to share, then record what you have shared, with whom and for what purpose

7. Recognising abuse and taking action

Staff, volunteers and governors must follow the procedures set out below in the event of a safeguarding issue.

Please note – in this and subsequent sections, you should take any references to the DSL to mean “the DSL (or deputy DSL)”.

7.1 If a child is suffering or likely to suffer harm, or in immediate danger

Make a referral to children’s social care and/or the police **immediately** if you believe a child is suffering or likely to suffer from harm, or is in immediate danger. **Anyone can make a referral.**

Tell the DSL (see section 5.2) as soon as possible if you make a referral directly.

In Hackney, Child Protection Referrals to the Multi Agency Safeguarding Hub (MASH) are made via an online form which can be found here:

<https://docs.google.com/forms/d/e/1FAIpQLSdnw7KDUUp6nwbbyrVmeg8D3JGFe0GjIYbBM1qlaUtHo9q-llg/viewform>

Information about reporting abuse to a local council can also be found here:

<https://www.gov.uk/report-child-abuse-to-local-council>

7.2 If a child makes a disclosure to you

If a child discloses a safeguarding issue to you, you should:

- › Listen to and believe them. Allow them time to talk freely and do not ask leading questions
- › Stay calm and do not show that you are shocked or upset
- › Tell the child they have done the right thing in telling you. Do not tell them they should have told you sooner
- › Explain what will happen next and that you will have to pass this information on. Do not promise to keep it a secret
- › Write up your conversation as soon as possible in the child’s own words. Stick to the facts, and do not put your own judgement on it
- › Sign and date the write-up and pass it on to the DSL. Alternatively, if appropriate, make a referral to children’s social care and/or the police directly (see 7.1), and tell the DSL as soon as possible that you have done so. Aside from these people, do not disclose the information to anyone else unless told to do so by a relevant authority involved in the safeguarding process

Bear in mind that some children may:

- › Not feel ready, or know how to tell someone that they are being abused, exploited or neglected
- › Not recognise their experiences as harmful
- › Feel embarrassed, humiliated or threatened. This could be due to their vulnerability, disability, sexual orientation and/or language barriers

None of this should stop you from having a ‘professional curiosity’ and speaking to the DSL if you have concerns about a child.

7.3 If you discover that FGM has taken place or a pupil is at risk of FGM

Keeping Children Safe in Education explains that FGM comprises “all procedures involving partial or total removal of the external female genitalia, or other injury to the female genital organs”.

FGM is illegal in the UK and a form of child abuse with long-lasting, harmful consequences. It is also known as ‘female genital cutting’, ‘circumcision’ or ‘initiation’.

Possible indicators that a pupil has already been subjected to FGM, and factors that suggest a pupil may be at risk, are set out in appendix 4 of this policy.

Any teacher who either:

- Is informed by a girl under 18 that an act of FGM has been carried out on her; or
- Observes physical signs which appear to show that an act of FGM has been carried out on a girl under 18 and they have no reason to believe that the act was necessary for the girl's physical or mental health or for purposes connected with labour or birth

Must immediately report this to the police, personally. This is a mandatory statutory duty, and teachers will face disciplinary sanctions for failing to meet it.

Unless they have been specifically told not to disclose, they should also discuss the case with the DSL and involve children's social care as appropriate.

Any other member of staff who discovers that an act of FGM appears to have been carried out on a **pupil under 18** must speak to the DSL and follow our local safeguarding procedures.

The duty for teachers mentioned above does not apply in cases where a pupil is *at risk* of FGM or FGM is suspected but is not known to have been carried out. Staff should not examine pupils.

Any member of staff who suspects a pupil is *at risk* of FGM or suspects that FGM has been carried out should speak to the DSL and follow our local safeguarding procedures.

Contact Hackney's children's social care team, tel 020 8356 5500, fast@hackney.gov.uk.

You can also call the NSPCC FGM helpline: 0800 028 3550 or email fgmhelp@nspcc.org.uk.

7.4 If you have concerns about a child (as opposed to believing a child is suffering

7.4 If you have concerns about a child (as opposed to believing a child is suffering or likely to suffer from harm, or is in immediate danger)

Figure 1 below, before section 7.7, illustrates the procedure to follow if you have any concerns about a child's welfare.

Where possible, speak to the DSL first to agree a course of action.

If in exceptional circumstances the DSL is not available, this should not delay appropriate action being taken. Speak to a member of the senior leadership team and/or take advice from local authority children's social care. You can also seek advice at any time from the NSPCC helpline on 0808 800 5000. Share details of any actions you take with the DSL as soon as practically possible.

Make a referral to local authority children's social care directly, if appropriate (see 'Referral' below). Share any action taken with the DSL as soon as possible.

Early help assessment

If an early help assessment is appropriate, the DSL will generally lead on liaising with other agencies and setting up an inter-agency assessment as appropriate. Staff may be required to support other agencies and professionals in an early help assessment, in some cases acting as the lead practitioner.

We will discuss and agree, with statutory safeguarding partners, levels for the different types of assessment, as part of local arrangements.

The DSL will keep the case under constant review and the school will consider a referral to local authority children's social care if the situation does not seem to be improving. Timelines of interventions will be monitored and reviewed.

Referral

If it is appropriate to refer the case to local authority children's social care or the police, the DSL will make the referral or support you to do so.

If you make a referral directly (see section 7.1), you must tell the DSL as soon as possible.

The local authority will make a decision within 1 working day of a referral about what course of action to take and will let the person who made the referral know the outcome. The DSL or person who made the referral

must follow up with the local authority if this information is not made available, and ensure outcomes are properly recorded.

If the child's situation does not seem to be improving after the referral, the DSL or person who made the referral must follow local escalation procedures to ensure their concerns have been addressed and that the child's situation improves. The DSL would usually in this case ring the local Multi Agency Safeguarding Hub and ask to speak to the Line Manager of the social worker concerned, or the Child Protection Case Manager as appropriate.

7.5 If you have concerns about extremism

If a child is not suffering or likely to suffer from harm, or in immediate danger, where possible speak to the DSL first to agree a course of action.

If in exceptional circumstances the DSL is not available, this should not delay appropriate action being taken. Speak to a member of the senior leadership team and/or seek advice from local authority children's social care. Make a referral to local authority children's social care directly, if appropriate (see 'Referral' above). Inform the DSL or deputy as soon as practically possible after the referral.

Where there is a concern, the DSL will consider the level of risk and decide which agency to make a referral to. This could include Channel, the government's programme for identifying and supporting individuals at risk of being drawn into terrorism, or the local authority children's social care team.

The Department for Education also has a dedicated telephone helpline, 020 7340 7264, which school staff and governors can call to raise concerns about extremism with respect to a pupil. You can also email counter.extremism@education.gov.uk. Note that this is not for use in emergency situations.

In an emergency, call 999 or the confidential anti-terrorist hotline on 0800 789 321 if you:

- › Think someone is in immediate danger
- › Think someone may be planning to travel to join an extremist group
- › See or hear something that may be terrorist-related

7.6 If you have a mental health concern

Mental health problems can, in some cases, be an indicator that a child has suffered or is at risk of suffering abuse, neglect or exploitation.

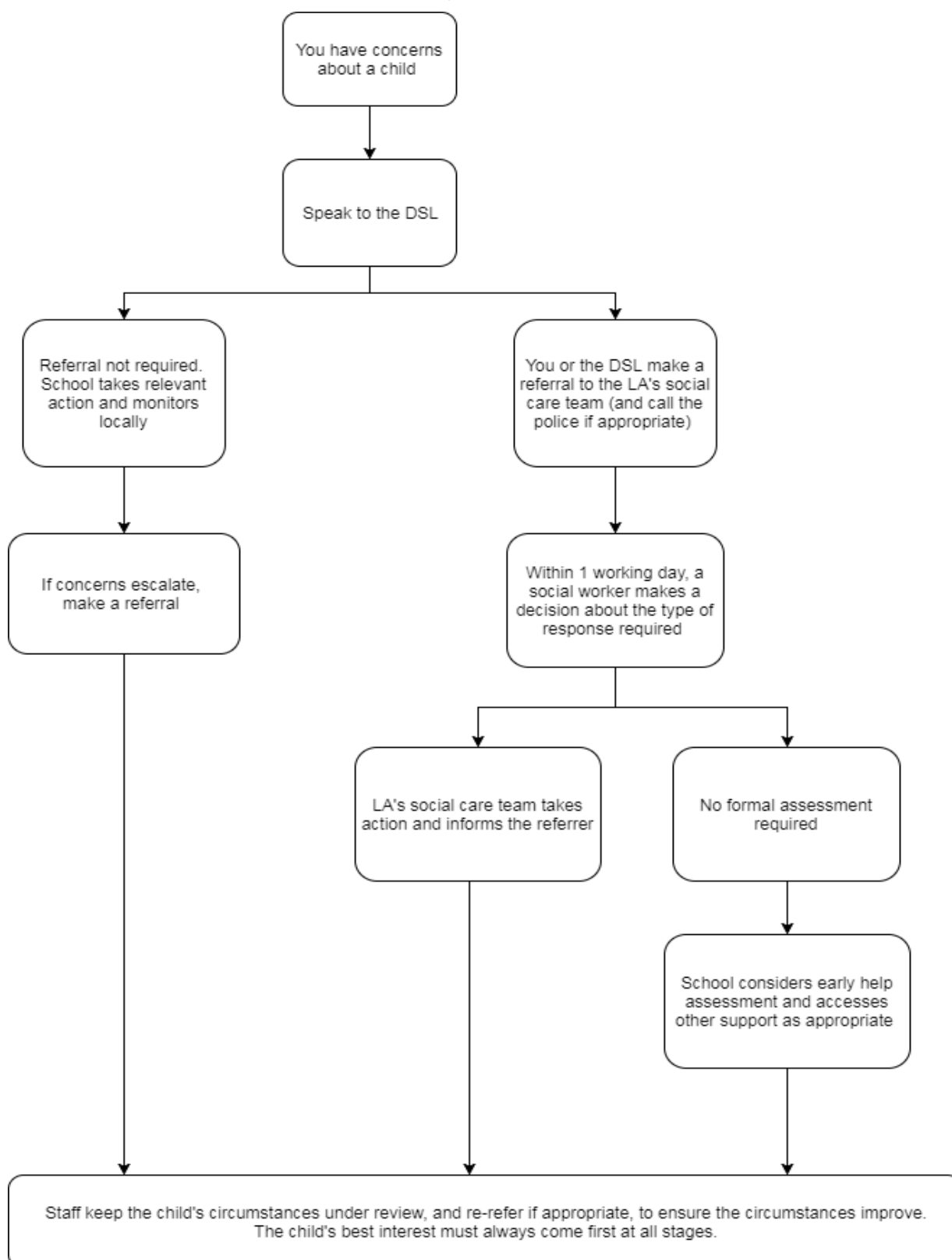
Staff will be alert to behavioural signs that suggest a child may be experiencing a mental health problem or be at risk of developing one.

If you have a mental health concern about a child that is also a safeguarding concern, take immediate action by following the steps in section 7.4.

If you have a mental health concern that is **not** also a safeguarding concern, speak to the DSL to agree a course of action.

Figure 1: procedure if you have concerns about a child's welfare (as opposed to believing a child is suffering or likely to suffer from harm, or in immediate danger)

(Note – if the DSL is unavailable, this should not delay action. See section 7.4 for what to do.)



7.7 Concerns about a staff member, supply teacher, volunteer or contractor

If you have concerns about a member of staff (including a supply teacher, volunteer or contractor), or an allegation is made about a member of staff (including a supply teacher, volunteer or contractor) posing a risk of harm to children, speak to the headteacher as soon as possible. If the concerns/allegations are about the headteacher, speak to the chair of governors.

The headteacher/chair of governors will then follow the procedures set out in appendix 3, if appropriate.

Where you believe there is a conflict of interest in reporting a concern or allegation about a member of staff (including a supply teacher, volunteer or contractor) to the headteacher, report it directly to the local authority designated officer (LADO).

Where appropriate, the school will inform Ofsted of the allegation and actions taken, within the necessary timescale (see appendix 3 for more detail).

7.8 Allegations of abuse made against other pupils

We recognise that children are capable of abusing their peers. Abuse will never be tolerated or passed off as “banter”, “just having a laugh” or “part of growing up”, as this can lead to a culture of unacceptable behaviours and an unsafe environment for pupils.

We also recognise the gendered nature of child-on-child abuse. However, all child-on-child abuse is unacceptable and will be taken seriously.

Most cases of pupils hurting other pupils will be dealt with under our school’s behaviour policy, but this child protection and safeguarding policy will apply to any allegations that raise safeguarding concerns. This might include where the alleged behaviour:

- › Is serious, and potentially a criminal offence
- › Could put pupils in the school at risk
- › Is violent
- › Involves pupils being forced to use drugs or alcohol
- › Involves sexual exploitation, sexual abuse or sexual harassment, such as indecent exposure, sexual assault, upskirting or sexually inappropriate pictures or videos (including the sharing of nudes and semi-nudes)

See appendix 4 for more information about child-on-child abuse.

Procedures for dealing with allegations of child-on-child abuse

If a pupil makes an allegation of abuse against another pupil:

- › You must record the allegation and tell the DSL, but do not investigate it
- › The DSL will contact the local authority children’s social care team and follow its advice, as well as the police if the allegation involves a potential criminal offence
- › The DSL will put a risk assessment and support plan into place for all children involved (including the victim(s), the child(ren) against whom the allegation has been made and any others affected) with a named person they can talk to if needed. This will include considering school transport as a potentially vulnerable place for a victim or alleged perpetrator(s)
- › The DSL will contact the children and adolescent mental health services (CAMHS), if appropriate

If the incident is a criminal offence and there are delays in the criminal process, the DSL will work closely with the police (and other agencies as required) while protecting children and/or taking any disciplinary measures against the alleged perpetrator. We will ask the police if we have any questions about the investigation.

Any incidents of child-on-child abuse of which staff are aware must be immediately recorded on CPOMS and the DSL informed.

Creating a supportive environment in school and minimising the risk of child-on-child abuse

We recognise the importance of taking proactive action to minimise the risk of child-on-child abuse, and of creating a supportive environment where victims feel confident in reporting incidents.

To achieve this, we will:

- › Challenge any form of derogatory or sexualised language or inappropriate behaviour between peers, including requesting or sending sexual images
- › Be vigilant to issues that particularly affect different genders – for example, sexualised or aggressive touching or grabbing towards female pupils, and initiation or hazing type violence with respect to boys
- › Ensure our curriculum helps to educate pupils about appropriate behaviour and consent
- › Ensure pupils are able to easily and confidently report abuse using our reporting systems (as described in section 7.10 below)
- › Ensure staff reassure victims that they are being taken seriously
- › Be alert to reports of sexual violence and/or harassment that may point to environmental or systemic problems that could be addressed by updating policies, processes and the curriculum, or could reflect wider issues in the local area that should be shared with safeguarding partners
- › Support children who have witnessed sexual violence, especially rape or assault by penetration. We will do all we can to make sure the victim, alleged perpetrator(s) and any witnesses are not bullied or harassed
- › Consider intra familial harms and any necessary support for siblings following a report of sexual violence and/or harassment
- › Ensure staff are trained to understand:
 - How to recognise the indicators and signs of child-on-child abuse, and know how to identify it and respond to reports
 - That even if there are no reports of child-on-child abuse in school, it does not mean it is not happening – staff should maintain an attitude of “it could happen here”
 - That if they have any concerns about a child’s welfare, they should act on them immediately rather than wait to be told, and that victims may not always make a direct report. For example:
 - Children can show signs or act in ways they hope adults will notice and react to
 - A friend may make a report
 - A member of staff may overhear a conversation
 - A child’s behaviour might indicate that something is wrong
 - That certain children may face additional barriers to telling someone because of their vulnerability, disability, gender, ethnicity and/or sexual orientation
 - That a pupil harming a peer could be a sign that the child is being abused themselves, and that this would fall under the scope of this policy
 - The important role they have to play in preventing child-on-child abuse and responding where they believe a child may be at risk from it
 - That they should speak to the DSL if they have any concerns
 - That social media is likely to play a role in the fall-out from any incident or alleged incident, including for potential contact between the victim, alleged perpetrator(s) and friends from either side

The DSL will take the lead role in any disciplining of the alleged perpetrator(s). We will provide support at the same time as taking any disciplinary action.

Disciplinary action can be taken while other investigations are going on, e.g. by the police. The fact that another body is investigating or has investigated an incident doesn’t (in itself) prevent our school from coming

to its own conclusion about what happened and imposing a penalty accordingly. We will consider these matters on a case-by-case basis, taking into account whether:

- › Taking action would prejudice an investigation and/or subsequent prosecution – we will liaise with the police and/or LA children's social care to determine this
- › There are circumstances that make it unreasonable or irrational for us to reach our own view about what happened while an independent investigation is ongoing

7.9 Sharing of nudes and semi-nudes ('sexting')

Your responsibilities when responding to an incident

If you are made aware of an incident involving the consensual or non-consensual sharing of nude or semi-nude images/videos (also known as 'sexting' or 'youth produced sexual imagery'), you must report it to the DSL immediately.

You must **not**:

- › View, copy, print, share, store or save the imagery yourself, or ask a pupil to share or download it (if you have already viewed the imagery by accident, you must report this to the DSL)
- › Delete the imagery or ask the pupil to delete it
- › Ask the pupil(s) who are involved in the incident to disclose information regarding the imagery (this is the DSL's responsibility)
- › Share information about the incident with other members of staff, the pupil(s) it involves or their, or other, parents and/or carers
- › Say or do anything to blame or shame any young people involved

You should explain that you need to report the incident, and reassure the pupil(s) that they will receive support and help from the DSL.

Initial review meeting

Following a report of an incident, the DSL will hold an initial review meeting with appropriate school staff – this may include the staff member who reported the incident and the safeguarding or leadership team that deals with safeguarding concerns. This meeting will consider the initial evidence and aim to determine:

- › Whether there is an immediate risk to pupil(s)
- › If a referral needs to be made to the police and/or children's social care
- › If it is necessary to view the image(s) in order to safeguard the young person (in most cases, images or videos should not be viewed)
- › What further information is required to decide on the best response
- › Whether the image(s) has been shared widely and via what services and/or platforms (this may be unknown)
- › Whether immediate action should be taken to delete or remove images or videos from devices or online services
- › Any relevant facts about the pupils involved which would influence risk assessment
- › If there is a need to contact another school, college, setting or individual
- › Whether to contact parents or carers of the pupils involved (in most cases parents/carers should be involved)

The DSL will make an immediate referral to police and/or children's social care if:

- › The incident involves an adult
- › There is reason to believe that a young person has been coerced, blackmailed or groomed, or if there are concerns about their capacity to consent (for example, owing to special educational needs)

- › What the DSL knows about the images or videos suggests the content depicts sexual acts which are unusual for the young person's developmental stage, or are violent
- › The imagery involves sexual acts and any pupil in the images or videos is under 13
- › The DSL has reason to believe a pupil is at immediate risk of harm owing to the sharing of nudes and semi-nudes (for example, the young person is presenting as suicidal or self-harming)

If none of the above apply then the DSL, in consultation with the headteacher and other members of staff as appropriate, may decide to respond to the incident without involving the police or children's social care. The decision will be made and recorded in line with the procedures set out in this policy.

Further review by the DSL

If at the initial review stage a decision has been made not to refer to police and/or children's social care, the DSL will conduct a further review to establish the facts and assess the risks.

They will hold interviews with the pupils involved (if appropriate).

If at any point in the process there is a concern that a pupil has been harmed or is at risk of harm, a referral will be made to children's social care and/or the police immediately.

Informing parents/carers

The DSL will inform parents/carers at an early stage and keep them involved in the process, unless there is a good reason to believe that involving them would put the pupil at risk of harm.

Referring to the police

If it is necessary to refer an incident to the police, this will be done through dialing 101.

Recording incidents

All incidents of sharing of nudes and semi-nudes, and the decisions made in responding to them, will be recorded. The record-keeping arrangements set out in section 14 of this policy also apply to recording these incidents.

Curriculum coverage

Pupils are taught about the issues surrounding the sharing of nudes and semi-nudes in Upper KS2 (Year 5 and 6) as part of our Jigsaw PSHE programme. Age-appropriate teaching covers the following in relation to the sharing of nudes and semi-nudes:

- › What it is
- › How it is most likely to be encountered
- › The consequences of requesting, forwarding or providing such images, including when it is and is not abusive and when it may be deemed as online sexual harassment
- › Issues of legality
- › The risk of damage to people's feelings and reputation

Pupils also learn the strategies and skills needed to manage:

- › Specific requests or pressure to provide (or forward) such images
- › The receipt of such images

This policy on the sharing of nudes and semi-nudes is also shared with pupils so they are aware of the processes the school will follow in the event of an incident.

7.10 Reporting systems for our pupils

Where there is a safeguarding concern, we will take the child's wishes and feelings into account when determining what action to take and what services to provide.

We recognise the importance of ensuring pupils feel safe and comfortable to come forward and report any concerns and/or allegations.

To achieve this, we will:

- › Put systems in place for pupils to confidently report abuse
- › Ensure our reporting systems are well promoted, easily understood and easily accessible for pupils
- › Make it clear to pupils that their concerns will be taken seriously, and that they can safely express their views and give feedback

In Jigsaw PSHE lessons children are frequently reminded of who they can talk to if they are worried or would like to report a concern. There are also displays and posters for childline to give children an alternative route for reporting concerns outside of school.

8. Online safety and the use of mobile technology

We recognise the importance of safeguarding children from potentially harmful and inappropriate online material, and we understand that technology is a significant component in many safeguarding and wellbeing issues.

To address this, our school aims to:

- › Have robust processes in place to ensure the online safety of pupils, staff, volunteers and governors
- › Protect and educate the whole school community in its safe and responsible use of technology, including mobile and smart technology (which we refer to as 'mobile phones')
- › Set clear guidelines for the use of mobile phones for the whole school community
- › Establish clear mechanisms to identify, intervene in and escalate any incidents or concerns, where appropriate

The 4 key categories of risk

Our approach to online safety is based on addressing the following categories of risk:

- › **Content** – being exposed to illegal, inappropriate or harmful content, such as pornography, fake news, racism, misogyny, self-harm, suicide, anti-Semitism, radicalisation and extremism
- › **Contact** – being subjected to harmful online interaction with other users, such as peer-to-peer pressure, commercial advertising and adults posing as children or young adults with the intention to groom or exploit them for sexual, criminal, financial or other purposes
- › **Conduct** – personal online behaviour that increases the likelihood of, or causes, harm, such as making, sending and receiving explicit images (e.g. consensual and non-consensual sharing of nudes and semi-nudes and/or pornography), sharing other explicit images and online bullying; and
- › **Commerce** – risks such as online gambling, inappropriate advertising, phishing and/or financial scams

To meet our aims and address the risks above we will:

- › Educate pupils about online safety as part of our curriculum. For example:
 - The safe use of social media, the internet and technology
 - Keeping personal information private
 - How to recognise unacceptable behaviour online
 - How to report any incidents of cyber-bullying, ensuring pupils are encouraged to do so, including where they are a witness rather than a victim

- › Train staff, as part of their induction, on safe internet use and online safeguarding issues including cyber-bullying and the risks of online radicalisation. All staff members will receive refresher training at least once each academic year
- › Educate parents/carers about online safety via our website, communications sent directly to them and during parents' evenings. We will also share clear procedures with them so they know how to raise concerns about online safety
- › Make sure staff are aware of any restrictions placed on them with regards to the use of their mobile phone and cameras, for example that:
 - Staff are allowed to bring their personal phones to school for their own use, but will limit such use to non-contact time when pupils are not present
 - Staff will not take pictures or recordings of pupils on their personal phones or cameras
- › Make all pupils, parents/carers, staff, volunteers and governors aware that they are expected to sign an agreement regarding the acceptable use of the internet in school, use of the school's ICT systems and use of their mobile and smart technology
- › Explain the sanctions we will use if a pupil is in breach of our policies on the acceptable use of the internet and mobile phones
- › Make sure all staff, pupils and parents/carers are aware that staff have the power to search pupils' phones, as set out in the [DfE's guidance on searching, screening and confiscation](#)
- › Put in place robust filtering and monitoring systems to limit children's exposure to the 4 key categories of risk (described above) from the school's IT systems
- › Carry out an annual review of our approach to online safety, supported by an annual risk assessment that considers and reflects the risks faced by our school community

9. Notifying parents or carers

Where appropriate, we will discuss any concerns about a child with the child's parents or carers. The DSL will normally do this in the event of a suspicion or disclosure.

Other staff will only talk to parents or carers about any such concerns following consultation with the DSL.

If we believe that notifying the parents or carers would increase the risk to the child, we will discuss this with the local authority children's social care team before doing so.

In the case of allegations of abuse made against other children, we will normally notify the parents or carers of all the children involved. We will think carefully about what information we provide about the other child involved, and when. We will work with the police and/or local authority children's social care to make sure our approach to information sharing is consistent.

The DSL will, along with any relevant agencies (this will be decided on a case-by-case basis):

- › Meet with the victim's parents or carers, with the victim, to discuss what's being put in place to safeguard them, and understand their wishes in terms of what support they may need and how the report will be progressed
- › Meet with the alleged perpetrator's parents or carers to discuss support for them, and what's being put in place that will impact them, e.g. moving them out of classes with the victim, and the reason(s) behind any decision(s)

10. Pupils with special educational needs, disabilities or health issues

We recognise that pupils with special educational needs (SEN) or disabilities or certain health conditions can face additional safeguarding challenges, and are 3 times more likely to be abused than their peers. Additional barriers can exist when recognising abuse and neglect in this group, including:

- › Assumptions that indicators of possible abuse such as behaviour, mood and injury relate to the child's condition without further exploration
- › Pupils being more prone to peer group isolation or bullying (including prejudice-based bullying) than other pupils

- › The potential for pupils with SEN, disabilities or certain health conditions being disproportionately impacted by behaviours such as bullying, without outwardly showing any signs
- › Communication barriers and difficulties in managing or reporting these challenges

We offer extra pastoral support for these pupils. This includes:

The DSL also being the SENDCO to ensure close monitoring of our SEND pupils, in particular those for whom a concern has been expressed, or communicated directly by the child.

Allocating a designated and familiar 1:1 staff member for any child with significant needs that might impair them from reporting a concern. This ensures that a relationship is built up where the support worker knows the child well and can quickly identify indicators that something might not be a cause for concern.

Any abuse involving pupils with SEND will require close liaison with the DSL (or deputy) and the SENCO.

11. Pupils with a social worker

Pupils may need a social worker due to safeguarding or welfare needs. We recognise that a child's experiences of adversity and trauma can leave them vulnerable to further harm as well as potentially creating barriers to attendance, learning, behaviour and mental health.

The DSL and all members of staff will work with and support social workers to help protect vulnerable children.

Where we are aware that a pupil has a social worker, the DSL will always consider this fact to ensure any decisions are made in the best interests of the pupil's safety, welfare and educational outcomes. For example, it will inform decisions about:

- › Responding to unauthorised absence or missing education where there are known safeguarding risks
- › The provision of pastoral and/or academic support

12. Looked-after and previously looked-after children

We will ensure that staff have the skills, knowledge and understanding to keep looked-after children and previously looked-after children safe. In particular, we will ensure that:

- › Appropriate staff have relevant information about children's looked after legal status, contact arrangements with birth parents or those with parental responsibility, and care arrangements
- › The DSL has details of children's social workers and relevant virtual school heads

We have appointed a designated teacher, Veronica Benjamin, who is responsible for promoting the educational achievement of looked-after children and previously looked-after children in line with statutory guidance.

The designated teacher is appropriately trained and has the relevant qualifications and experience to perform the role.

As part of their role, the designated teacher will:

- › Work closely with the DSL to ensure that any safeguarding concerns regarding looked-after and previously looked-after children are quickly and effectively responded to
- › Work with virtual school heads to promote the educational achievement of looked-after and previously looked-after children, including discussing how pupil premium plus funding can be best used to support looked-after children and meet the needs identified in their personal education plans

13. Complaints and concerns about school safeguarding policies

13.1 Complaints against staff

Complaints against staff that are likely to require a child protection investigation will be handled in accordance with our procedures for dealing with allegations of abuse made against staff (see appendix 3).

13.2 Other complaints

Safeguarding-related complaints relating to pupils or premises should initially be made to the Headteacher as per the school's complaints procedure. If these are not resolved satisfactorily they can be referred on to the Chair of Governors.

As the school has an Early Years provision, full account is taken of requirements related to complaints set out in the safeguarding and welfare section of the statutory framework for the Early Years Foundation Stage (paragraph 3.75).

13.3 Whistle-blowing

Staff must acknowledge their individual responsibility to bring matters of concern to the attention of senior management and/or relevant agencies. Although this can be difficult this is particularly important where the welfare of children may be at risk. You may be the first to recognise that something is wrong but may not feel able to express your concerns out of a feeling that this would be disloyal to colleagues or you may fear harassment or victimisation. These feelings, however natural, must never result in a child or young person continuing to be unnecessarily at risk. Remember it is often the most vulnerable children or young person who is targeted. These children need someone like you to safeguard their welfare.

Don't think what if I am wrong – think what if I am right.

Reasons for Whistle Blowing

- Each individual has a responsibility for raising concerns about unacceptable practice or behaviour
- To prevent the problem worsening or widening
- To protect or reduce risks to others
- To prevent becoming implicated yourself

What stops people from whistle blowing

- Fear of starting a chain of events which spirals out of control
- Disrupting the work or project
- Fear of getting it wrong
- Fear of repercussions or damaging careers
- Fear of not being believed

How to raise a concern

- You should voice your concerns, suspicions or uneasiness as soon as you feel you can. The earlier a concern is expressed the easier and sooner action can be taken
- Try to pinpoint exactly what practice is concerning you and why
- Approach your immediate manager, Designated Safeguarding Lead or Deputy Designated Safeguarding Lead.
- If your concern is about your Head teacher, speak to the Chair of Governors or if you feel you need to take it to someone outside the school, contact Hackney's Local Authority Designated Officer.
- Make sure you get a satisfactory response – don't let matters rest
- Ideally, you should put your concerns in writing, outlining the background and history, giving names, dates and places wherever you can.

A member of staff is not expected to prove the truth of an allegation, but will need to demonstrate sufficient grounds for the concern.

*Staff includes any adult, paid or voluntary, who works in a school or educational establishment within the Local Authority.

What happens next?

- You should be given information on the nature and progress of any enquiries
- Your employer has a responsibility to protect you from harassment or victimisation
- No action will be taken against you if the concern proves to be unfounded and was raised in good faith
- Malicious allegations may be considered as a disciplinary offence.

Self-Reporting

There may be occasions where a member of staff has a personal difficulty, perhaps a physical or mental health problem, which they know to be impinging on their professional competence. Staff have a responsibility to discuss such a situation with their line manager so professional and personal support can be offered to the member of staff concerned. Whilst such reporting will remain confidential in most instances, this cannot be guaranteed where personal difficulties raise concerns about the welfare or safety of children.

Further Advice and Support

It is recognisable that whistle blowing can be difficult and stressful. Advice and support is available from your line manager, HR department and /or your professional or trade union.

“Absolutely without fail – challenge poor practice or performance. If you ignore or collude with poor practice it makes it harder to sound the alarm when things go wrong” (reproduced with acknowledgement to “Sounding the Alarm” – Barnardos).

14. Record-keeping

We will hold records in line with our records retention schedule.

All safeguarding concerns, discussions, decisions made and the reasons for those decisions, must be recorded in writing. If you are in any doubt about whether to record something, discuss it with the DSL.

Records will include:

- › A clear and comprehensive summary of the concern
- › Details of how the concern was followed up and resolved
- › A note of any action taken, decisions reached and the outcome

Concerns and referrals will be kept in a separate child protection file for each child.

Any non-confidential records will be readily accessible and available. Confidential information and records will be held securely and only available to those who have a right or professional need to see them.

Safeguarding records relating to individual children will be retained for a reasonable period of time after they have left the school.

Safeguarding records which contain information about allegations of sexual abuse will be retained for the Independent Inquiry into Child Sexual Abuse (IICSA), for the term of the inquiry.

If a child for whom the school has, or has had, safeguarding concerns moves to another school, the DSL will ensure that their child protection file is forwarded as soon as possible, securely, and separately from the main pupil file.

To allow the new school/college to have support in place when the child arrives, this should be within:

- › **5 days** for an in-year transfer, or within
- › **The first 5 days** of the start of a new term

In addition, if the concerns are significant or complex, and/or social services are involved, the DSL will speak to the DSL of the receiving school and provide information to enable them to have time to make any necessary preparations to ensure the safety of the child.

At Nightingale, all Child Protection records are held on CPOMS, an online portal to which all staff have access for reporting, and the DSL / Deputy DSL and Headteacher have access to all records. Through this system, child protection files can be received from other schools, or sent on to a next school.

In addition:

- › Appendix 2 sets out our policy on record-keeping specifically with respect to recruitment and pre-appointment checks
- › Appendix 3 sets out our policy on record-keeping with respect to allegations of abuse made against staff

15. Training

15.1 All staff

All staff members will undertake safeguarding and child protection training at induction, including on whistle-blowing procedures and online safety, to ensure they understand the school's safeguarding systems and their responsibilities, and can identify signs of possible abuse or neglect.

This training will be regularly updated and will:

- › Be integrated, aligned and considered as part of the whole-school safeguarding approach and wider staff training, and curriculum planning
- › Be in line with advice from the 3 safeguarding partners
- › Have regard to the Teachers' Standards to support the expectation that all teachers:
 - Manage behaviour effectively to ensure a good and safe environment
 - Have a clear understanding of the needs of all pupils

All staff will have training on the government's anti-radicalisation strategy, Prevent, to enable them to identify children at risk of being drawn into terrorism and to challenge extremist ideas.

Staff will also receive regular safeguarding and child protection updates, including on online safety, as required but at least annually (for example, through emails, e-bulletins and staff meetings).

Contractors who are provided through a private finance initiative (PFI) or similar contract will also receive safeguarding training.

Volunteers will receive appropriate training, if applicable.

15.2 The DSL and Deputy

The DSL and Deputy will undertake child protection and safeguarding training at least every 2 years.

In addition, they will update their knowledge and skills at regular intervals and at least annually (for example, through e-bulletins, meeting other DSLs, or taking time to read and digest safeguarding developments).

They will also undertake Prevent awareness training.

15.3 Governors

All governors receive training about safeguarding and child protection (including online safety) at induction, which is regularly updated. This is to make sure that they:

- › Have the knowledge and information needed to perform their functions and understand their responsibilities, such as providing strategic challenge
- › Can be assured that safeguarding policies and procedures are effective and support the school to deliver a robust whole-school approach to safeguarding

As the chair of governors may be required to act as the 'case manager' in the event that an allegation of abuse is made against the headteacher, they receive training in managing allegations for this purpose.

15.4 Recruitment – interview panels

At least 1 person conducting any interview for any post at the school will have undertaken safer recruitment training. This will cover, as a minimum, the contents of Keeping Children Safe in Education, and will be in line with local safeguarding procedures.

See appendix 2 of this policy for more information about our safer recruitment procedures.

15.5 Staff who have contact with pupils and families

All staff who have contact with children and families will have supervisions which will provide them with support, coaching and training, promote the interests of children and allow for confidential discussions of sensitive issues.

16. Monitoring arrangements

This policy will be reviewed **annually** by the Link Governor for Safeguarding. At every review, it will be approved by the full governing board.

17. Links with other policies

This policy links to the following policies and procedures:

- › Behaviour
- › Staff Code of Conduct (Appended to this policy)
- › Intimate Care Policy
- › SEND Policy
- › Complaints
- › Health and safety
- › Attendance
- › Online safety
- › Equality
- › Relationships and sex education
- › First aid
- › Curriculum
- › Designated teacher for looked-after and previously looked-after children
- › Privacy notices

These appendices are based on the Department for Education's statutory guidance, Keeping Children Safe in Education.

Appendix 1: types of abuse

Abuse, including neglect, and safeguarding issues are rarely standalone events that can be covered by 1 definition or label. In most cases, multiple issues will overlap.

Physical abuse may involve hitting, shaking, throwing, poisoning, burning or scalding, drowning, suffocating or otherwise causing physical harm to a child. Physical harm may also be caused when a parent or carer fabricates the symptoms of, or deliberately induces, illness in a child.

Emotional abuse is the persistent emotional maltreatment of a child such as to cause severe and adverse effects on the child's emotional development. Some level of emotional abuse is involved in all types of maltreatment of a child, although it may occur alone.

Emotional abuse may involve:

- › Conveying to a child that they are worthless or unloved, inadequate, or valued only insofar as they meet the needs of another person
- › Not giving the child opportunities to express their views, deliberately silencing them or 'making fun' of what they say or how they communicate
- › Age or developmentally inappropriate expectations being imposed on children. These may include interactions that are beyond a child's developmental capability, as well as overprotection and limitation of exploration and learning, or preventing the child participating in normal social interaction
- › Seeing or hearing the ill-treatment of another
- › Serious bullying (including cyber-bullying), causing children frequently to feel frightened or in danger, or the exploitation or corruption of children

Sexual abuse involves forcing or enticing a child or young person to take part in sexual activities, not necessarily involving a high level of violence, whether or not the child is aware of what is happening. The activities may involve:

- › Physical contact, including assault by penetration (for example, rape or oral sex) or non-penetrative acts such as masturbation, kissing, rubbing and touching outside of clothing
- › Non-contact activities, such as involving children in looking at, or in the production of, sexual images, watching sexual activities, encouraging children to behave in sexually inappropriate ways, or grooming a child in preparation for abuse (including via the internet)

Sexual abuse is not solely perpetrated by adult males. Women can also commit acts of sexual abuse, as can other children.

Neglect is the persistent failure to meet a child's basic physical and/or psychological needs, likely to result in the serious impairment of the child's health or development. Neglect may occur during pregnancy as a result of maternal substance abuse.

Once a child is born, neglect may involve a parent or carer failing to:

- › Provide adequate food, clothing and shelter (including exclusion from home or abandonment)
- › Protect a child from physical and emotional harm or danger
- › Ensure adequate supervision (including the use of inadequate care-givers)
- › Ensure access to appropriate medical care or treatment

It may also include neglect of, or unresponsiveness to, a child's basic emotional needs.

Appendix 2: safer recruitment and DBS checks – policy and procedures

Recruitment and selection process

To make sure we recruit suitable people, we will ensure that those involved in the recruitment and employment of staff to work with children have received appropriate safer recruitment training.

We have put the following steps in place during our recruitment and selection process to ensure we are committed to safeguarding and promoting the welfare of children.

Advertising

When advertising roles, we will make clear:

- › Our school's commitment to safeguarding and promoting the welfare of children
- › That safeguarding checks will be undertaken
- › The safeguarding requirements and responsibilities of the role, such as the extent to which the role will involve contact with children
- › Whether or not the role is exempt from the Rehabilitation of Offenders Act 1974 and the amendments to the Exceptions Order 1975, 2013 and 2020. If the role is exempt, certain spent convictions and cautions are 'protected', so they do not need to be disclosed, and if they are disclosed, we cannot take them into account

Application forms

Our application forms will:

- › Include a statement saying that it is an offence to apply for the role if an applicant is barred from engaging in regulated activity relevant to children (where the role involves this type of regulated activity)
- › Include a copy of, or link to, our child protection and safeguarding policy and our policy on the employment of ex-offenders

Shortlisting

Our shortlisting process will involve at least 2 people and will:

- › Consider any inconsistencies and look for gaps in employment and reasons given for them
- › Explore all potential concerns

Once we have shortlisted candidates, we will ask shortlisted candidates to:

- › Complete a self-declaration of their criminal record or any information that would make them unsuitable to work with children, so that they have the opportunity to share relevant information and discuss it at interview stage. The information we will ask for includes:
 - If they have a criminal history
 - Whether they are included on the barred list
 - Whether they are prohibited from teaching
 - Information about any criminal offences committed in any country in line with the law as applicable in England and Wales
 - Any relevant overseas information
- › Sign a declaration confirming the information they have provided is true

We will also consider carrying out an online search on shortlisted candidates to help identify any incidents or issues that are publicly available online.

Seeking references and checking employment history

We will obtain references before interview. Any concerns raised will be explored further with referees and taken up with the candidate at interview.

When seeking references we will:

- › Not accept open references
- › Liaise directly with referees and verify any information contained within references with the referees
- › Ensure any references are from the candidate's current employer and completed by a senior person. Where the referee is school based, we will ask for the reference to be confirmed by the headteacher/principal as accurate in respect to disciplinary investigations
- › Obtain verification of the candidate's most recent relevant period of employment if they are not currently employed
- › Secure a reference from the relevant employer from the last time the candidate worked with children if they are not currently working with children
- › Compare the information on the application form with that in the reference and take up any inconsistencies with the candidate
- › Resolve any concerns before any appointment is confirmed

Interview and selection

When interviewing candidates, we will:

- › Probe any gaps in employment, or where the candidate has changed employment or location frequently, and ask candidates to explain this
- › Explore any potential areas of concern to determine the candidate's suitability to work with children
- › Record all information considered and decisions made

Pre-appointment vetting checks

We will record all information on the checks carried out in the school's single central record (SCR). Copies of these checks, where appropriate, will be held in individuals' personnel files. We follow requirements and best practice in retaining copies of these checks, as set out below.

New staff

All offers of appointment will be conditional until satisfactory completion of the necessary pre-employment checks. When appointing new staff, we will:

- › Verify their identity
- › Obtain (via the applicant) an enhanced DBS certificate, including barred list information for those who will be engaging in regulated activity (see definition below). We will obtain the certificate before, or as soon as practicable after, appointment, including when using the DBS update service. We will not keep a copy of the certificate for longer than 6 months, but when the copy is destroyed we may still keep a record of the fact that vetting took place, the result of the check and recruitment decision taken
- › Obtain a separate barred list check if they will start work in regulated activity before the DBS certificate is available
- › Verify their mental and physical fitness to carry out their work responsibilities
- › Verify their right to work in the UK. We will keep a copy of this verification for the duration of the member of staff's employment and for 2 years afterwards
- › Verify their professional qualifications, as appropriate
- › Ensure they are not subject to a prohibition order if they are employed to be a teacher
- › Carry out further additional checks, as appropriate, on candidates who have lived or worked outside of the UK. These could include, where available:
 - For all staff, including teaching positions: criminal records checks for overseas applicants
 - For teaching positions: obtaining a letter from the professional regulating authority in the country where the applicant has worked, confirming that they have not imposed any sanctions

or restrictions on that person, and/or are aware of any reason why that person may be unsuitable to teach

We will ensure that appropriate checks are carried out to ensure that individuals are not disqualified under the 2018 Childcare Disqualification Regulations and Childcare Act 2006. Where we take a decision that an individual falls outside of the scope of these regulations and we do not carry out such checks, we will retain a record of our assessment on the individual's personnel file. This will include our evaluation of any risks and control measures put in place, and any advice sought.

Regulated activity means a person who will be:

- › Responsible, on a regular basis in a school or college, for teaching, training, instructing, caring for or supervising children; or
- › Carrying out paid, or unsupervised unpaid, work regularly in a school or college where that work provides an opportunity for contact with children; or
- › Engaging in intimate or personal care or overnight activity, even if this happens only once and regardless of whether they are supervised or not

Existing staff

In certain circumstances we will carry out all the relevant checks on existing staff as if the individual was a new member of staff. These circumstances are when:

- › There are concerns about an existing member of staff's suitability to work with children; or
- › An individual moves from a post that is not regulated activity to one that is; or
- › There has been a break in service of 12 weeks or more

We will refer to the DBS anyone who has harmed, or poses a risk of harm, to a child or vulnerable adult where:

- › We believe the individual has engaged in relevant conduct; or
- › We believe the individual has received a caution or conviction for a relevant (automatic barring either with or without the right to make representations) offence, under the Safeguarding Vulnerable Groups Act 2006 (Prescribed Criteria and Miscellaneous Provisions) Regulations 2009; or
- › We believe the 'harm test' is satisfied in respect of the individual (i.e. they may harm a child or vulnerable adult or put them at risk of harm); and
- › The individual has been removed from working in regulated activity (paid or unpaid) or would have been removed if they had not left

Agency and third-party staff

We will obtain written notification from any agency or third-party organisation that it has carried out the necessary safer recruitment checks that we would otherwise perform. We will also check that the person presenting themselves for work is the same person on whom the checks have been made.

Contractors

We will ensure that any contractor, or any employee of the contractor, who is to work at the school has had the appropriate level of DBS check (this includes contractors who are provided through a PFI or similar contract). This will be:

- › An enhanced DBS check with barred list information for contractors engaging in regulated activity
- › An enhanced DBS check, not including barred list information, for all other contractors who are not in regulated activity but whose work provides them with an opportunity for regular contact with children

We will obtain the DBS check for self-employed contractors.

We will not keep copies of such checks for longer than 6 months.

Contractors who have not had any checks will not be allowed to work unsupervised or engage in regulated activity under any circumstances.

We will check the identity of all contractors and their staff on arrival at the school.

For self-employed contractors such as music teachers or sports coaches, we will ensure that appropriate checks are carried out to ensure that individuals are not disqualified under the 2018 Childcare Disqualification Regulations and Childcare Act 2006. Where we decide that an individual falls outside of the scope of these regulations and we do not carry out such checks, we will retain a record of our assessment. This will include our evaluation of any risks and control measures put in place, and any advice sought.

Trainee/student teachers

Where applicants for initial teacher training are salaried by us, we will ensure that all necessary checks are carried out.

Where trainee teachers are fee-funded, we will obtain written confirmation from the training provider that necessary checks have been carried out and that the trainee has been judged by the provider to be suitable to work with children.

In both cases, this includes checks to ensure that individuals are not disqualified under the 2018 Childcare Disqualification Regulations and Childcare Act 2006.

Volunteers

We will:

- › Never leave an unchecked volunteer unsupervised or allow them to work in regulated activity
- › Obtain an enhanced DBS check with barred list information for all volunteers who are new to working in regulated activity
- › Carry out a risk assessment when deciding whether to seek an enhanced DBS check without barred list information for any volunteers not engaging in regulated activity. We will retain a record of this risk assessment
- › Ensure that appropriate checks are carried out to ensure that individuals are not disqualified under the 2018 Childcare Disqualification Regulations and Childcare Act 2006. Where we decide that an individual falls outside of the scope of these regulations and we do not carry out such checks, we will retain a record of our assessment. This will include our evaluation of any risks and control measures put in place, and any advice sought

Governors

All governors have an enhanced DBS check without barred list information.

They will have an enhanced DBS check with barred list information if working in regulated activity.

All governors will also have a section 128 check (as a section 128 direction disqualifies an individual from being a maintained school governor).

Staff working in alternative provision settings

Where we place a pupil with an alternative provision provider, we obtain written confirmation from the provider that they have carried out the appropriate safeguarding checks on individuals working there that we would otherwise perform.

Adults who supervise pupils on work experience

When organising work experience, we will ensure that policies and procedures are in place to protect children from harm.

We will also consider whether it is necessary for barred list checks to be carried out on the individuals who supervise a pupil under 16 on work experience. This will depend on the specific circumstances of the work experience, including the nature of the supervision, the frequency of the activity being supervised, and whether the work is regulated activity.

Appendix 3: allegations of abuse made against staff

Section 1: allegations that may meet the harms threshold

This section applies to all cases in which it is alleged that a current member of staff, including a supply teacher, volunteer or contractor, has:

- › Behaved in a way that has harmed a child, or may have harmed a child, and/or
- › Possibly committed a criminal offence against or related to a child, and/or
- › Behaved towards a child or children in a way that indicates they may pose a risk of harm to children, and/or
- › Behaved or may have behaved in a way that indicates they may not be suitable to work with children – this includes behaviour taking place both inside and outside of school

If we're in any doubt as to whether a concern meets the harm threshold, we will consult our local authority designated officer (LADO).

We will deal with any allegation of abuse quickly, in a fair and consistent way that provides effective child protection while also supporting the individual who is the subject of the allegation.

A 'case manager' will lead any investigation. This will be the headteacher, or the chair of governors where the headteacher is the subject of the allegation. The case manager will be identified at the earliest opportunity.

Our procedures for dealing with allegations will be applied with common sense and judgement.

Suspension of the accused until the case is resolved

Suspension of the accused will not be the default position, and will only be considered in cases where there is reason to suspect that a child or other children is/are at risk of harm, or the case is so serious that there might be grounds for dismissal. In such cases, we will only suspend an individual if we have considered all other options available and there is no reasonable alternative.

Based on an assessment of risk, we will consider alternatives such as:

- › Redeployment within the school so that the individual does not have direct contact with the child or children concerned
- › Providing an assistant to be present when the individual has contact with children
- › Redeploying the individual to alternative work in the school so that they do not have unsupervised access to children
- › Moving the child or children to classes where they will not come into contact with the individual, making it clear that this is not a punishment and parents/carers have been consulted
- › Temporarily redeploying the individual to another role in a different location, for example to an alternative school or other work for the local authority.

If in doubt, the case manager will seek views from the school's personnel adviser and the designated officer at the local authority, as well as the police and children's social care where they have been involved.

Definitions for outcomes of allegation investigations

- › **Substantiated:** there is sufficient evidence to prove the allegation
- › **Malicious:** there is sufficient evidence to disprove the allegation and there has been a deliberate act to deceive, or to cause harm to the subject of the allegation
- › **False:** there is sufficient evidence to disprove the allegation
- › **Unsubstantiated:** there is insufficient evidence to either prove or disprove the allegation (this does not imply guilt or innocence)
- › **Unfounded:** to reflect cases where there is no evidence or proper basis which supports the allegation being made

Procedure for dealing with allegations

In the event of an allegation that meets the criteria above, the case manager will take the following steps:

- › Conduct basic enquiries in line with local procedures to establish the facts to help determine whether there is any foundation to the allegation before carrying on with the steps below
- › Discuss the allegation with the designated officer at the local authority. This is to consider the nature, content and context of the allegation and agree a course of action, including whether further enquiries are necessary to enable a decision on how to proceed, and whether it is necessary to involve the police and/or children's social care services. (The case manager may, on occasion, consider it necessary to involve the police *before* consulting the designated officer – for example, if the accused individual is deemed to be an immediate risk to children or there is evidence of a possible criminal offence. In such cases, the case manager will notify the designated officer as soon as practicably possible after contacting the police)
- › Inform the accused individual of the concerns or allegations and likely course of action as soon as possible after speaking to the designated officer (and the police or children's social care services, where necessary). Where the police and/or children's social care services are involved, the case manager will only share such information with the individual as has been agreed with those agencies
- › Where appropriate (in the circumstances described above), carefully consider whether suspension of the individual from contact with children at the school is justified or whether alternative arrangements such as those outlined above can be put in place. Advice will be sought from the designated officer, police and/or children's social care services, as appropriate
- › Where the case manager is concerned about the welfare of other children in the community or the individual's family, they will discuss these concerns with the DSL and make a risk assessment of the situation. If necessary, the DSL may make a referral to children's social care
- › **If immediate suspension is considered necessary**, agree and record the rationale for this with the designated officer. The record will include information about the alternatives to suspension that have been considered, and why they were rejected. Written confirmation of the suspension will be provided to the individual facing the allegation or concern within 1 working day, and the individual will be given a named contact at the school and their contact details
- › **If it is decided that no further action is to be taken** in regard to the subject of the allegation or concern, record this decision and the justification for it and agree with the designated officer what information should be put in writing to the individual and by whom, as well as what action should follow both in respect of the individual and those who made the initial allegation
- › **If it is decided that further action is needed**, take steps as agreed with the designated officer to initiate the appropriate action in school and/or liaise with the police and/or children's social care services as appropriate
- › Provide effective support for the individual facing the allegation or concern, including appointing a named representative to keep them informed of the progress of the case and considering what other support is appropriate. Staff will be encouraged to seek support from trade union representatives and a helpline number can be provided by the school for welfare counselling.
- › Inform the parents or carers of the child/children involved about the allegation as soon as possible if they do not already know (following agreement with children's social care services and/or the police, if applicable). The case manager will also inform the parents or carers of the requirement to maintain confidentiality about any allegations made against teachers (where this applies) while investigations are ongoing. Any parent or carer who wishes to have the confidentiality restrictions removed in respect of a teacher will be advised to seek legal advice
- › Keep the parents or carers of the child/children involved informed of the progress of the case (only in relation to their child – no information will be shared regarding the staff member)
- › Make a referral to the DBS where it is thought that the individual facing the allegation or concern has engaged in conduct that harmed or is likely to harm a child, or if the individual otherwise poses a risk of harm to a child

We will inform Ofsted of any allegations of serious harm or abuse by any person living, working, or looking after children at the premises (whether the allegations relate to harm or abuse committed on the premises or elsewhere), and any action taken in respect of the allegations. This notification will be made as soon as reasonably possible and always within 14 days of the allegations being made.

If the school is made aware that the secretary of state has made an interim prohibition order in respect of an individual, we will immediately suspend that individual from teaching, pending the findings of the investigation by the Teaching Regulation Agency.

Where the police are involved, wherever possible the school will ask the police at the start of the investigation to obtain consent from the individuals involved to share their statements and evidence for use in the school's disciplinary process, should this be required at a later point.

Additional considerations for supply teachers and all contracted staff

If there are concerns or an allegation is made against someone not directly employed by the school, such as a supply teacher or contracted staff member provided by an agency, we will take the actions below in addition to our standard procedures.

- › We will not decide to stop using an individual due to safeguarding concerns without finding out the facts and liaising with our LADO to determine a suitable outcome
- › The governing board will discuss with the agency whether it is appropriate to suspend the individual, or redeploy them to another part of the school, while the school carries out the investigation
- › We will involve the agency fully, but the school will take the lead in collecting the necessary information and providing it to the LADO as required
- › We will address issues such as information sharing, to ensure any previous concerns or allegations known to the agency are taken into account (we will do this, for example, as part of the allegations management meeting or by liaising directly with the agency where necessary)

When using an agency, we will inform them of our process for managing allegations, and keep them updated about our policies as necessary, and will invite the agency's HR manager or equivalent to meetings as appropriate.

Timescales

We will deal with all allegations as quickly and effectively as possible and will endeavour to comply with the following timescales, where reasonably practicable:

- › Any cases where it is clear immediately that the allegation is unsubstantiated or malicious should be resolved within 1 week
- › If the nature of an allegation does not require formal disciplinary action, appropriate action should be taken within 3 working days
- › If a disciplinary hearing is required and can be held without further investigation, this should be held within 15 working days

However, these are objectives only and where they are not met, we will endeavour to take the required action as soon as possible thereafter.

Specific actions

Action following a criminal investigation or prosecution

The case manager will discuss with the local authority's designated officer whether any further action, including disciplinary action, is appropriate and, if so, how to proceed, taking into account information provided by the police and/or children's social care services.

Conclusion of a case where the allegation is substantiated

If the allegation is substantiated and the individual is dismissed or the school ceases to use their services, or the individual resigns or otherwise ceases to provide their services, the school will make a referral to the DBS for consideration of whether inclusion on the barred lists is required.

If the individual concerned is a member of teaching staff, the school will consider whether to refer the matter to the Teaching Regulation Agency to consider prohibiting the individual from teaching.

Individuals returning to work after suspension

If it is decided on the conclusion of a case that an individual who has been suspended can return to work, the case manager will consider how best to facilitate this.

The case manager will also consider how best to manage the individual's contact with the child or children who made the allegation, if they are still attending the school.

Unsubstantiated, unfounded, false or malicious reports

If a report is:

- › Determined to be unsubstantiated, unfounded, false or malicious, the DSL will consider the appropriate next steps. If they consider that the child and/or person who made the allegation is in need of help, or the allegation may have been a cry for help, a referral to children's social care may be appropriate
- › Shown to be deliberately invented, or malicious, the school will consider whether any disciplinary action is appropriate against the individual(s) who made it

Unsubstantiated, unfounded, false or malicious allegations

If an allegation is:

- › Determined to be unsubstantiated, unfounded, false or malicious, the LADO and case manager will consider the appropriate next steps. If they consider that the child and/or person who made the allegation is in need of help, or the allegation may have been a cry for help, a referral to children's social care may be appropriate
- › Shown to be deliberately invented, or malicious, the school will consider whether any disciplinary action is appropriate against the individual(s) who made it

Confidentiality and information sharing

The school will make every effort to maintain confidentiality and guard against unwanted publicity while an allegation is being investigated or considered.

The case manager will take advice from the LADO, police and children's social care services, as appropriate, to agree:

- Who needs to know about the allegation and what information can be shared
- How to manage speculation, leaks and gossip, including how to make parents or carers of a child/children involved aware of their obligations with respect to confidentiality
- What, if any, information can be reasonably given to the wider community to reduce speculation
- How to manage press interest if, and when, it arises

Record-keeping

The case manager will maintain clear records about any case where the allegation or concern meets the criteria above and store them on the individual's confidential personnel file for the duration of the case.

The records of any allegation that, following an investigation, is found to be malicious or false will be deleted from the individual's personnel file (unless the individual consents for the records to be retained on the file).

For all other allegations (which are not found to be malicious or false), the following information will be kept on the file of the individual concerned:

- A clear and comprehensive summary of the allegation
- Details of how the allegation was followed up and resolved
- Notes of any action taken, decisions reached and the outcome
- A declaration on whether the information will be referred to in any future reference

In these cases, the school will provide a copy to the individual, in agreement with children's social care or the police as appropriate.

Where records contain information about allegations of sexual abuse, we will preserve these for the Independent Inquiry into Child Sexual Abuse (IICSA), for the term of the inquiry. We will retain all other records at least until the individual has reached normal pension age, or for 10 years from the date of the allegation if that is longer.

References

When providing employer references, we will:

- › Not refer to any allegation that has been found to be false, unfounded, unsubstantiated or malicious, or any repeated allegations which have all been found to be false, unfounded, unsubstantiated or malicious
- › Include substantiated allegations, provided that the information is factual and does not include opinions

Learning lessons

After any cases where the allegations are *substantiated*, the case manager will review the circumstances of the case with the local authority's designated officer to determine whether there are any improvements that we can make to the school's procedures or practice to help prevent similar events in the future.

This will include consideration of (as applicable):

- Issues arising from the decision to suspend the member of staff
- The duration of the suspension
- Whether or not the suspension was justified
- The use of suspension when the individual is subsequently reinstated. We will consider how future investigations of a similar nature could be carried out without suspending the individual

For all other cases, the case manager will consider the facts and determine whether any improvements can be made.

Non-recent allegations

Abuse can be reported, no matter how long ago it happened.

We will report any non-recent allegations made by a child to the LADO in line with our local authority's procedures for dealing with non-recent allegations.

Where an adult makes an allegation to the school that they were abused as a child, we will advise the individual to report the allegation to the police.

Section 2: concerns that do not meet the harm threshold

This section applies to all concerns (including allegations) about members of staff, including supply teachers, volunteers and contractors, which do not meet the harm threshold set out in section 1 above.

Concerns may arise through, for example:

- › Suspicion
- › Complaint
- › Safeguarding concern or allegation from another member of staff
- › Disclosure made by a child, parent or other adult within or outside the school
- › Pre-employment vetting checks

We recognise the importance of responding to and dealing with any concerns in a timely manner to safeguard the welfare of children.

Definition of low-level concerns

The term 'low-level' concern is any concern – no matter how small – that an adult working in or on behalf of the school may have acted in a way that:

- › Is inconsistent with the staff code of conduct, including inappropriate conduct outside of work, **and**
- › Does not meet the allegations threshold or is otherwise not considered serious enough to consider a referral to the designated officer at the local authority

Examples of such behaviour could include, but are not limited to:

- › Being overly friendly with children
- › Having favourites
- › Taking photographs of children on their mobile phone
- › Engaging with a child on a one-to-one basis in a secluded area or behind a closed door
- › Humiliating pupils

Sharing low-level concerns

We recognise the importance of creating a culture of openness, trust and transparency to encourage all staff to confidentially share low-level concerns so that they can be addressed appropriately.

We will create this culture by:

- › Ensuring staff are clear about what appropriate behaviour is, and are confident in distinguishing expected and appropriate behaviour from concerning, problematic or inappropriate behaviour, in themselves and others
- › Empowering staff to share any low-level concerns as per section 7.7 of this policy
- › Empowering staff to self-refer
- › Addressing unprofessional behaviour and supporting the individual to correct it at an early stage
- › Providing a responsive, sensitive and proportionate handling of such concerns when they are raised
- › Helping to identify any weakness in the school's safeguarding system

Responding to low-level concerns

If the concern is raised via a third party, the headteacher will collect evidence where necessary by speaking:

- › Directly to the person who raised the concern, unless it has been raised anonymously
- › To the individual involved and any witnesses

The headteacher will use the information collected to categorise the type of behaviour and determine any further action, in line with the school's staff code of conduct (appended to this policy). The headteacher will be the ultimate decision-maker in respect of all low-level concerns, though they may wish to collaborate with the DSL.

The headteacher will decide, usually in consultation with the LADO, whether a threshold of harm has been met by the low-level concern raised.

Once a concern has been received and initial enquiries conducted, the headteacher will review the information and determine whether the behaviour (i) is entirely consistent with their staff code of conduct and the law, (ii) constitutes a low-level concern, (iii) is not serious enough to consider a referral to the LADO – but may merit consulting with and seeking advice from the LADO, and on a no-names basis if necessary, (iv) when considered with any other low-level concerns that have previously been raised about the same individual, could now meet the threshold of an allegation and should be referred to the LADO/ other relevant external agencies, or (v) in and of itself meets the threshold of an allegation and should be referred to the LADO/other relevant external agencies.

During the entire process, notes will be made of every conversation and element of the enquiry to provide a complete contemporaneous record. This will include notes regarding their determination, the rationale for this and any action taken as a result.

If it is determined that the behaviour raised in the concern is entirely consistent with the staff code of conduct and the law the following actions will be taken by the headteacher:

- Will have a conversation with the individual in question and update them and to inform them of any action taken.
- Will speak to the person who raised the concern and will review with them the outcome and the reasons why it is believed the behavior was in line with the school's staff code of conduct and the law.
- The headteacher will review in consultation with the DSL, whether there is a need to further train staff regarding the identification of low-level concerns.

If it is determined that the behaviour raised in the concern constitutes a low-level concern, the headteacher will:

- Have a values-based conversation with the member of staff in question, explaining carefully why the behavior raised a concern in the context of the school's staff code of conduct. Clear consequences should be outlined regarding any repeated incidents of the same behavior.
- If necessary, open and transparent monitoring and possibly a risk assessment may be appropriate.

Some low-level concerns may also raise issues of misconduct or poor performance. The headteacher/ Safeguarding Lead should also consider whether this is the case – by referring to the organisation's disciplinary and/or capability procedure and taking advice from HR on a named or no-names basis where necessary. If the headteacher or Safeguarding Lead considers that the organisation's disciplinary or capability procedure may be triggered, they should refer the matter to HR. Any such referral should be made by the Headteacher or Safeguarding Lead having received the low-level concern and not by individual staff members. Equally, it is essential that there is close liaison and appropriate information sharing between the headteacher or Safeguarding Lead and HR, so that an holistic view of the individual can be taken. Where a low-level concern does not raise misconduct or poor performance issues, it will not be a matter for HR.

Record keeping

All low-level concerns will be recorded in writing. In addition to details of the concern raised, records will include the context in which the concern arose, any action taken and the rationale for decisions and action taken.

Records will be:

- › Kept confidential, held securely and comply with the DPA 2018 and UK GDPR
- › Reviewed so that potential patterns of concerning, problematic or inappropriate behaviour can be identified. Where a pattern of such behaviour is identified, we will decide on a course of action, either through our disciplinary procedures or, where a pattern of behaviour moves from a concern to meeting the harms threshold as described in section 1 of this appendix, we will refer it to the designated officer at the local authority
- › Retained at least until the individual leaves employment at the school

Where a low-level concern relates to a supply teacher or contractor, we will notify the individual's employer, so any potential patterns of inappropriate behaviour can be identified.

References

We will not include low-level concerns in references unless:

- › The concern (or group of concerns) has met the threshold for referral to the designated officer at the local authority and is found to be substantiated; and/or
- › The concern (or group of concerns) relates to issues which would ordinarily be included in a reference, such as misconduct or poor performance

Appendix 4: specific safeguarding issues

Note: All staff and Governors have access to SSSCPD, an online training portal on which further training and support for all of the following areas can be found.

Children missing from education

A child going missing from education, particularly repeatedly, can be a warning sign of a range of safeguarding issues. This might include abuse or neglect, such as sexual abuse or exploitation or child criminal exploitation, or issues such as mental health problems, substance abuse, radicalisation, FGM or forced marriage.

There are many circumstances where a child may become missing from education, but some children are particularly at risk. These include children who:

- › Are at risk of harm or neglect
- › Are at risk of forced marriage or FGM
- › Come from Gypsy, Roma, or Traveller families
- › Come from the families of service personnel
- › Go missing or run away from home or care
- › Are supervised by the youth justice system
- › Cease to attend a school
- › Come from new migrant families

We will follow our procedures for unauthorised absence and for dealing with children who go missing from education, particularly on repeat occasions, to help identify the risk of abuse and neglect, including sexual exploitation, and to help prevent the risks of going missing in future. This includes informing the local authority if a child leaves the school without a new school being named, and adhering to requirements with respect to sharing information with the local authority, when applicable, when removing a child's name from the admission register at non-standard transition points.

Staff will be trained in signs to look out for and the individual triggers to be aware of when considering the risks of potential safeguarding concerns which may be related to being missing, such as travelling to conflict zones, FGM and forced marriage.

If a staff member suspects that a child is suffering from harm or neglect, we will follow local child protection procedures, including with respect to making reasonable enquiries. We will make an immediate referral to the local authority children's social care team, and the police, if the child is suffering or likely to suffer from harm, or in immediate danger.

Child criminal exploitation

Child criminal exploitation (CCE) is a form of abuse where an individual or group takes advantage of an imbalance of power to coerce, control, manipulate or deceive a child into criminal activity, in exchange for something the victim needs or wants, and/or for the financial or other advantage of the perpetrator or facilitator, and/or through violence or the threat of violence.

The abuse can be perpetrated by males or females, and children or adults. It can be a one-off occurrence or a series of incidents over time, and range from opportunistic to complex organised abuse.

The victim can be exploited even when the activity appears to be consensual. It does not always involve physical contact and can happen online. For example, young people may be forced to work in cannabis factories, coerced into moving drugs or money across the country (county lines), forced to shoplift or pickpocket, or to threaten other young people.

Indicators of CCE can include a child:

- › Appearing with unexplained gifts or new possessions

- › Associating with other young people involved in exploitation
- › Suffering from changes in emotional wellbeing
- › Misusing drugs and alcohol
- › Going missing for periods of time or regularly coming home late
- › Regularly missing school or education
- › Not taking part in education

If a member of staff suspects CCE, they will discuss this with the DSL. The DSL will trigger the local safeguarding procedures, including a referral to the local authority's children's social care team and the police, if appropriate.

Child sexual exploitation

Child sexual exploitation (CSE) is a form of child sexual abuse where an individual or group takes advantage of an imbalance of power to coerce, manipulate or deceive a child into sexual activity, in exchange for something the victim needs or wants and/or for the financial advantage or increased status of the perpetrator or facilitator. It may, or may not, be accompanied by violence or threats of violence.

The abuse can be perpetrated by males or females, and children or adults. It can be a one-off occurrence or a series of incidents over time, and range from opportunistic to complex organised abuse.

The victim can be exploited even when the activity appears to be consensual. Children or young people who are being sexually exploited may not understand that they are being abused. They often trust their abuser and may be tricked into believing they are in a loving, consensual relationship.

CSE can include both physical contact (penetrative and non-penetrative acts) and non-contact sexual activity. It can also happen online. For example, young people may be persuaded or forced to share sexually explicit images of themselves, have sexual conversations by text, or take part in sexual activities using a webcam. CSE may also occur without the victim's immediate knowledge, for example through others copying videos or images.

In addition to the CCE indicators above, indicators of CSE can include a child:

- › Having an older boyfriend or girlfriend
- › Suffering from sexually transmitted infections or becoming pregnant

If a member of staff suspects CSE, they will discuss this with the DSL. The DSL will trigger the local safeguarding procedures, including a referral to the local authority's children's social care team and the police, if appropriate.

Child-on-child abuse

Child-on-child abuse is when children abuse other children. This type of abuse can take place inside and outside of school. It can also take place both face-to-face and online, and can occur simultaneously between the 2.

Our school has a zero-tolerance approach to sexual violence and sexual harassment. We recognise that even if there are no reports, that doesn't mean that this kind of abuse isn't happening.

Child-on-child abuse is most likely to include, but may not be limited to:

- › Bullying (including cyber-bullying, prejudice-based and discriminatory bullying)
- › Abuse in intimate personal relationships between children (this is sometimes known as 'teenage relationship abuse')
- › Physical abuse such as hitting, kicking, shaking, biting, hair pulling, or otherwise causing physical harm (this may include an online element which facilitates, threatens and/or encourages physical abuse)
- › Sexual violence, such as rape, assault by penetration and sexual assault (this may include an online element which facilitates, threatens and/or encourages sexual violence)

- › Sexual harassment, such as sexual comments, remarks, jokes and online sexual harassment, which may be standalone or part of a broader pattern of abuse
- › Causing someone to engage in sexual activity without consent, such as forcing someone to strip, touch themselves sexually, or to engage in sexual activity with a third party
- › Consensual and non-consensual sharing of nude and semi-nude images and/or videos (also known as sexting or youth produced sexual imagery)
- › Upskirting, which typically involves taking a picture under a person's clothing without their permission, with the intention of viewing their genitals or buttocks to obtain sexual gratification, or cause the victim humiliation, distress or alarm
- › Initiation/hazing type violence and rituals (this could include activities involving harassment, abuse or humiliation used as a way of initiating a person into a group and may also include an online element)

Where children abuse their peers online, this can take the form of, for example, abusive, harassing, and misogynistic messages; the non-consensual sharing of indecent images, especially around chat groups; and the sharing of abusive images and pornography, to those who don't want to receive such content.

If staff have any concerns about child-on-child abuse, or a child makes a report to them, they will follow the procedures set out in section 7 of this policy, as appropriate. In particular, section 7.8 and 7.9 set out more detail about our school's approach to this type of abuse.

When considering instances of harmful sexual behaviour between children, we will consider their ages and stages of development. We recognise that children displaying harmful sexual behaviour have often experienced their own abuse and trauma, and will offer them appropriate support.

Domestic abuse

Children can witness and be adversely affected by domestic abuse and/or violence at home where it occurs between family members. In some cases, a child may blame themselves for the abuse or may have had to leave the family home as a result.

Types of domestic abuse include intimate partner violence, abuse by family members, teenage relationship abuse (abuse in intimate personal relationships between children) and child/adolescent to parent violence and abuse. It can be physical, sexual, financial, psychological or emotional. It can also include ill treatment that isn't physical, as well as witnessing the ill treatment of others – for example, the impact of all forms of domestic abuse on children.

Anyone can be a victim of domestic abuse, regardless of gender, age, ethnicity, socioeconomic status, sexuality or background, and domestic abuse can take place inside or outside of the home. Children who witness domestic abuse are also victims.

Exposure to domestic abuse and/or violence can have a serious, long-lasting emotional and psychological impact on children and affect their health, wellbeing, development and ability to learn.

If police are called to an incident of domestic abuse and any children in the household have experienced the incident, the police will inform the key adult in school (usually the designated safeguarding lead) before the child or children arrive at school the following day. The school is part of Operation Encompass to ensure that this happens.

The DSL will provide support according to the child's needs and update records about their circumstances.

Homelessness

Being homeless or being at risk of becoming homeless presents a real risk to a child's welfare.

The DSL and Deputy will be aware of contact details and referral routes in to the local housing authority so they can raise/progress concerns at the earliest opportunity (where appropriate and in accordance with local procedures).

Where a child has been harmed or is at risk of harm, the DSL will also make a referral to children's social care.

So-called ‘honour-based’ abuse (including FGM and forced marriage)

So-called ‘honour-based’ abuse (HBA) encompasses incidents or crimes committed to protect or defend the honour of the family and/or community, including FGM, forced marriage, and practices such as breast ironing.

Abuse committed in this context often involves a wider network of family or community pressure and can include multiple perpetrators.

All forms of HBA are abuse and will be handled and escalated as such. All staff will be alert to the possibility of a child being at risk of HBA or already having suffered it. If staff have a concern, they will speak to the DSL, who will activate local safeguarding procedures.

FGM

The DSL will make sure that staff have access to appropriate training to equip them to be alert to children affected by FGM or at risk of FGM.

Section 7.3 of this policy sets out the procedures to be followed if a staff member discovers that an act of FGM appears to have been carried out or suspects that a pupil is at risk of FGM.

Indicators that FGM has already occurred include:

- › A pupil confiding in a professional that FGM has taken place
- › A mother/family member disclosing that FGM has been carried out
- › A family/pupil already being known to social services in relation to other safeguarding issues
- › A girl:
 - Having difficulty walking, sitting or standing, or looking uncomfortable
 - Finding it hard to sit still for long periods of time (where this was not a problem previously)
 - Spending longer than normal in the bathroom or toilet due to difficulties urinating
 - Having frequent urinary, menstrual or stomach problems
 - Avoiding physical exercise or missing PE
 - Being repeatedly absent from school, or absent for a prolonged period
 - Demonstrating increased emotional and psychological needs – for example, withdrawal or depression, or significant change in behaviour
 - Being reluctant to undergo any medical examinations
 - Asking for help, but not being explicit about the problem
 - Talking about pain or discomfort between her legs

Potential signs that a pupil may be at risk of FGM include:

- › The girl’s family having a history of practising FGM (this is the biggest risk factor to consider)
- › FGM being known to be practised in the girl’s community or country of origin
- › A parent or family member expressing concern that FGM may be carried out
- › A family not engaging with professionals (health, education or other) or already being known to social care in relation to other safeguarding issues
- › A girl:
 - Having a mother, older sibling or cousin who has undergone FGM
 - Having limited level of integration within UK society
 - Confiding to a professional that she is to have a “special procedure” or to attend a special occasion to “become a woman”

- Talking about a long holiday to her country of origin or another country where the practice is prevalent, or parents/carers stating that they or a relative will take the girl out of the country for a prolonged period
- Requesting help from a teacher or another adult because she is aware or suspects that she is at immediate risk of FGM
- Talking about FGM in conversation – for example, a girl may tell other children about it (although it is important to take into account the context of the discussion)
- Being unexpectedly absent from school
- Having sections missing from her 'red book' (child health record) and/or attending a travel clinic or equivalent for vaccinations/anti-malarial medication

The above indicators and risk factors are not intended to be exhaustive.

Forced marriage

Forcing a person into marriage is a crime. A forced marriage is one entered into without the full and free consent of 1 or both parties and where violence, threats, or any other form of coercion is used to cause a person to enter into a marriage. Threats can be physical or emotional and psychological.

Staff will receive training around forced marriage and the presenting symptoms. We are aware of the '1 chance' rule, i.e. we may only have 1 chance to speak to the potential victim and only 1 chance to save them.

If a member of staff suspects that a pupil is being forced into marriage, they will speak to the pupil about their concerns in a secure and private place. They will then report this to the DSL.

The DSL will:

- › Speak to the pupil about the concerns in a secure and private place
- › Activate the local safeguarding procedures and refer the case to the local authority's designated officer
- › Seek advice from the Forced Marriage Unit on 020 7008 0151 or fmf@fco.gov.uk
- › Refer the pupil to an education welfare officer, pastoral tutor, learning mentor, or school counsellor, as appropriate

Preventing radicalisation

- › **Radicalisation** refers to the process by which a person comes to support terrorism and extremist ideologies associated with terrorist groups
- › **Extremism** is vocal or active opposition to fundamental British values, such as democracy, the rule of law, individual liberty, and mutual respect and tolerance of different faiths and beliefs. This also includes calling for the death of members of the armed forces
- › **Terrorism** is an action that:
 - Endangers or causes serious violence to a person/people;
 - Causes serious damage to property; or
 - Seriously interferes or disrupts an electronic system

The use or threat of terrorism must be designed to influence the government or to intimidate the public and is made for the purpose of advancing a political, religious or ideological cause.

Schools have a duty to prevent children from being drawn into terrorism. The DSL will undertake Prevent awareness training and make sure that staff have access to appropriate training to equip them to identify children at risk.

We will assess the risk of children in our school being drawn into terrorism. This assessment will be based on an understanding of the potential risk in our local area, in collaboration with our local safeguarding partners and local police force.

We will ensure that suitable internet filtering is in place, and equip our pupils to stay safe online at school and at home.

There is no single way of identifying an individual who is likely to be susceptible to an extremist ideology. Radicalisation can occur quickly or over a long period.

Staff will be alert to changes in pupils' behaviour.

The government website [Educate Against Hate](#) and charity [NSPCC](#) say that signs that a pupil is being radicalised can include:

- › Refusal to engage with, or becoming abusive to, peers who are different from themselves
- › Becoming susceptible to conspiracy theories and feelings of persecution
- › Changes in friendship groups and appearance
- › Rejecting activities they used to enjoy
- › Converting to a new religion
- › Isolating themselves from family and friends
- › Talking as if from a scripted speech
- › An unwillingness or inability to discuss their views
- › A sudden disrespectful attitude towards others
- › Increased levels of anger
- › Increased secretiveness, especially around internet use
- › Expressions of sympathy for extremist ideologies and groups, or justification of their actions
- › Accessing extremist material online, including on Facebook or Twitter
- › Possessing extremist literature
- › Being in contact with extremist recruiters and joining, or seeking to join, extremist organisations

Children who are at risk of radicalisation may have low self-esteem, or be victims of bullying or discrimination. It is important to note that these signs can also be part of normal teenage behaviour – staff should have confidence in their instincts and seek advice if something feels wrong.

If staff are concerned about a pupil, they will follow our procedures set out in section 7.5 of this policy, including discussing their concerns with the DSL.

Staff should **always** take action if they are worried.

Further information on the school's measures to prevent radicalisation are set out in other school policies and procedures, including Behaviour Policy, Curriculum Maps and Anti-Bullying Policy.

Sexual violence and sexual harassment between children in schools

Sexual violence and sexual harassment can occur:

- › Between 2 children of any age and sex
- › Through a group of children sexually assaulting or sexually harassing a single child or group of children
- › Online and face to face (both physically and verbally)

Sexual violence and sexual harassment exist on a continuum and may overlap.

Children who are victims of sexual violence and sexual harassment will likely find the experience stressful and distressing. This will, in all likelihood, adversely affect their educational attainment and will be exacerbated if the alleged perpetrator(s) attends the same school.

If a victim reports an incident, it is essential that staff make sure they are reassured that they are being taken seriously and that they will be supported and kept safe. A victim should never be given the impression that

they are creating a problem by reporting any form of abuse or neglect. Nor should a victim ever be made to feel ashamed for making a report.

When supporting victims, staff will:

- › Reassure victims that the law on child-on-child abuse is there to protect them, not criminalise them
- › Regularly review decisions and actions, and update policies with lessons learnt
- › Look out for potential patterns of concerning, problematic or inappropriate behaviour, and decide on a course of action where we identify any patterns
- › Consider if there are wider cultural issues within the school that enabled inappropriate behaviour to occur and whether revising policies and/or providing extra staff training could minimise the risk of it happening again
- › Remain alert to the possible challenges of detecting signs that a child has experienced sexual violence, and show sensitivity to their needs

Some groups are potentially more at risk. Evidence shows that girls, children with SEN and/or disabilities, and lesbian, gay, bisexual and transgender (LGBT) children are at greater risk.

Staff should be aware of the importance of:

- › Challenging inappropriate behaviours
- › Making clear that sexual violence and sexual harassment is not acceptable, will never be tolerated and is not an inevitable part of growing up
- › Challenging physical behaviours (potentially criminal in nature), such as grabbing bottoms, breasts and genitalia, pulling down trousers, flicking bras and lifting up skirts. Dismissing or tolerating such behaviours risks normalising them

If staff have any concerns about sexual violence or sexual harassment, or a child makes a report to them, they will follow the procedures set out in section 7 of this policy, as appropriate. In particular, section 7.8 and 7.9 set out more detail about our school's approach to this type of abuse.

Serious violence

Indicators which may signal that a child is at risk from, or involved with, serious violent crime may include:

- › Increased absence from school
- › Change in friendships or relationships with older individuals or groups
- › Significant decline in performance
- › Signs of self-harm or a significant change in wellbeing
- › Signs of assault or unexplained injuries
- › Unexplained gifts or new possessions (this could indicate that the child has been approached by, or is involved with, individuals associated with criminal networks or gangs and may be at risk of criminal exploitation (see above))

Risk factors which increase the likelihood of involvement in serious violence include:

- › Being male
- › Having been frequently absent or permanently excluded from school
- › Having experienced child maltreatment
- › Having been involved in offending, such as theft or robbery

Staff will be aware of these indicators and risk factors. If a member of staff has a concern about a pupil being involved in, or at risk of, serious violence, they will report this to the DSL.

Checking the identity and suitability of visitors

All visitors will be required to verify their identity to the satisfaction of staff and to leave their belongings, including their mobile phone(s), in a safe place during their visit. Lockers can be made available.

If the visitor is unknown to the setting, we will check their credentials and reason for visiting before allowing them to enter the setting. Visitors should be ready to produce identification.

Visitors are expected to sign in using the visitor welcome screen and wear a visitor's badge.

Visitors to the school who are visiting for a professional purpose, such as educational psychologists and school improvement officers, will be asked to show photo ID and:

- › Will be asked to show their DBS certificate, which will be checked alongside their photo ID; or
- › The organisation sending the professional, such as the LA or educational psychology service, will provide prior written confirmation that an appropriate level of DBS check has been carried out (if this is provided, we will not ask to see the DBS certificate)

All other visitors, including visiting speakers, will be accompanied by a member of staff at all times. We will not invite into the school any speaker who is known to disseminate extremist views, and will carry out appropriate checks to ensure that any individual or organisation using school facilities is not seeking to disseminate extremist views or radicalise pupils or staff.

Non-collection of children

If a child is not collected at the end of the session/day, we will:

Firstly, call parents on every available number using SIMS. Call the Headteacher and/or DSL. If this fails to ensure pick-up, call the Multi-Agency Safeguarding Hub.

Missing pupils

Our procedures are designed to ensure that a missing child is found and returned to effective supervision as soon as possible. If a child goes missing, we will:

Our procedures are designed to ensure that a missing child is found and returned to effective supervision as soon as possible. If a child goes missing, we will use the tanoy system to inform all staff to immediately check their e-mails, through which information about who is missing within the building will be sent. If it is suspected that a child has left site, the police will be immediately informed on 999, followed by their parents.

If a child does not arrive at school, a first day absence call will be made within 30 minutes of the start of the school day. If a parent is not available on the mobile number they provided, a text message and voicemail will be left. If the parent informs us that the child should have arrived at school, they will be told to ring the police and begin a missing person search.

APPENDIX 5 – CODE OF CONDUCT

Section 1 – Keeping Children Safe

- Context
- Whistleblowing
- Sharing Concerns

Section 2 – Personal Conduct When Working With Children

- Context
- Positions of Trust
- Personal Conduct
- Dress and Appearance
- Communication with Children and Young People
- Communication with Parents
- Physical Contact
- Other Activities Requiring Physical Contact
- Social Contact
- Sexual Contact
- One to One Situations
- Behaviour Management
- Use of Control and Physical Intervention
- Educational Visits and After School Activities
- Transporting Pupils
- Home Visits
- The Use of Personal Living Space
- Gifts, Rewards and Favouritism
- Access to Inappropriate Images and Internet Usage
- Photography and Videos
- Personal ICT Equipment Brought onto the School Premises
- Confidentiality

Introduction

All adults working at Nightingale have a duty of care to ensure the safety and wellbeing of all children at our school. This responsibility is shared between us all and must guide the decisions we make every day as well as our diligence in ensuring that safeguarding policies and procedures are followed in all aspects of our work.

This Code of Conduct is based on the following principals:

- The welfare of the child is paramount.
- It is the responsibility of all adults to safeguard and promote the welfare of children and young people. This responsibility extends to a duty of care for those adults employed, commissioned or contracted to work with children at our school.
- Adults who work at Nightingale are responsible for their own actions and behaviour and should at all times follow the advice given in this Code of Conduct.
- Adults at Nightingale should work and be seen to work, in an open and transparent way.
- The same professional standards will always be applied regardless of culture, disability, gender, language, racial origin, religious belief and/or sexual identity.
- Adults at Nightingale should continually monitor and review their practice and the practice of other adults in the school and ensure they follow the guidance contained in this document.

Why do we need a code of conduct?

We recognise that the vast majority of adults who work with children in any educational setting act professionally and aim to provide a safe and supportive environment that secures the well-being and very best outcomes for children and young people in their care. Nowhere should this be truer than at Nightingale where our staff consistently embody the school's Guiding Principal of 'Creating a Safe Space'.

However, it is known that in our area of work tensions and misunderstandings can occur and on occasions staff can be subject to allegations that may be malicious or misplaced. They may arise from differing perceptions of the same event, but when they occur, they are inevitably distressing and difficult for all concerned.

Equally, it must be recognised that some allegations will be genuine and there are adults who will deliberately seek out, create or exploit opportunities to abuse children. It is therefore essential that all possible steps are taken to safeguard children and young people and ensure that the adults working with them are safe to do so.

This document seeks to provide a framework both for staff to understand their roles, responsibilities and conduct around children but also to allow staff to identify when the behaviour of another adult in the school may be considered concerning so that it may be reported swiftly to the Headteacher or the Designated Safeguarding Lead.

Much of the advice contained in this document is taken directly from the document *Guidance for Safer Working Practice for Adults who work with Children and Young People in Education Settings* published in 2009 by the Department for Children, Schools and Families and we recommend that staff familiarise themselves with this document as the guidance contained within it is very helpful. Staff should also familiarise themselves with Nightingale's Safeguarding and Child Protection Policy.

Section 1 – Keeping Children Safe

Whether working in a paid or voluntary capacity, adults at Nightingale have a duty to keep children safe and to protect them from physical, emotional or sexual harm. Children and young people have a right to be treated with respect and dignity. It follows that trusted adults are expected to take reasonable steps to ensure the safety and well-being of children and young people as failure to do so may be regarded in law as neglect.

A 'Duty of Care' is defined as follows; *The duty which rests upon an individual or organisation to ensure that all reasonable steps are taken to ensure the safety of a child or young person involved in any activity or*

interaction for which that individual or organisation is responsible. Any person in charge of, or working with children and young people in any capacity is considered, both legally and morally to owe them a duty of care.

If you are at all concerned about the welfare of a child at Nightingale, whether this concern is based on what is happening at school or in the home, you must report this immediately and directly to one of the school's designated safeguarding leads in person.

Whistleblowing

If you have a concern about the conduct of any other member of staff please raise this immediately with a member of the Senior Leadership Team. You do not have to have 'evidence' in order to raise a concern, as there may be factors of which you are unaware. In matters of child protection instead of thinking 'what if I am wrong?' it is better to think 'what if I am right?'

Whistle blowing is the mechanism by which adults can voice their concerns, made in good faith, without fear of repercussion. Further details may be gained in person from the Designated Safeguarding Lead or by reading the school's Safeguarding and Child Protection Policy. Adults who use the whistleblowing procedure can be assured that their employment rights are protected.

Sharing Concerns

By reading the guidance contained within this document all staff should have a clear idea of the behaviours which the school may consider concerning. All allegations will be taken seriously and properly investigated in accordance with local procedures and statutory guidance.

In the event of any allegation being made to someone other than a manager, information should be clearly and promptly recorded and reported to a member of the Senior Leadership Team without delay.

Adults should always feel able to discuss with a member of the Senior Leadership Team any difficulties or problems that may affect their relationship with children and young people so that appropriate support can be provided or action can be taken.

Section 2 – Personal Conduct when working with children

Context:

Staff or volunteers can use the guidance contained in this section if they are unsure whether they should have concerns about the behaviour of any other adult in our school.

This guidance cannot provide a complete checklist of what is, or is not, inappropriate behaviour for adults in all circumstances. We recognise that there may be occasions and circumstances in which adults have to make decisions or act in the best interests of the child or young person which could contravene this guidance or where no guidance exists. Individuals are expected to make judgements about their behaviour in order to secure the best interests and welfare of the children in their charge. Such judgements, in these circumstances, should always be recorded and shared with a member of the Senior Leadership Team.

Adults should always consider whether their actions are warranted, proportionate and safe and applied equitably.

Positions of Trust

As a result of their knowledge, position and/or the authority invested in their role, all adults working with children and young people are in positions of trust in relation to the young people in their care. Broadly speaking, a relationship of trust can be described as one in which one party is in a position of power or influence over the other by virtue of their work or the nature of their activity. It is vital for all those in positions of trust to understand the power this can give them over those they care for and the responsibility they must exercise as a consequence of this relationship.

A relationship between an adult and a child or young person cannot be a relationship between equals. There is potential for exploitation and harm of vulnerable young people. Adults have a responsibility to ensure that an unequal balance of power is not used for personal advantage or gratification.

Adults should always maintain appropriate professional boundaries and avoid behaviour that might be misinterpreted by others. They should record any incident with this potential and report it to a member of the Senior Leadership Team.

Personal Conduct

All adults working with children and young people have a responsibility to maintain public confidence in their ability to safeguard the welfare and best interests of children and young people. It is therefore expected that they will adopt high standards of personal conduct in order to maintain the confidence and respect of the public in general and all those with whom they work.

There may be times, for example, when an adult's behaviour or actions in their personal life come under scrutiny from local communities, the media or public authorities. This may also occur through the use of social media. This could be because their behaviour is considered to compromise their position in their workplace or indicate an unsuitability to work with children or young people. Misuse of drugs, alcohol or acts of violence would be examples of such behaviour.

Adults in contact with children and young people should therefore understand and be aware, that safe practice also involves using judgement and integrity about behaviours in places other than the work setting, including their profiles on social media sites and the Internet.

Dress and Appearance

A person's dress and appearance are matters of personal choice and self-expression. However, adults should dress in ways that are appropriate to their role and this may need to be different to how they dress when not at work.

Adults who work with children and young people should ensure that they are dressed appropriately, professionally and safely for the tasks and the work they undertake.

Those who dress in a manner that could reasonably be considered as inappropriate could render themselves vulnerable to criticism and should expect that a member of the Senior Leadership Team will talk with them about their choices.

Communication with Children and Young People *(including the Use of Technology)*

Communication between children and adults, by whatever method, should take place within clear and explicit professional boundaries. This includes the wider use of technology such as mobile phones text messaging, e-mails, digital cameras, videos, web-cams, websites and blogs. Adults should not share any personal information with a child or young person. They should not request, or respond to, any personal information from the child/young person, other than that which might be appropriate as part of their professional role. Adults should ensure that all communications are transparent and open to scrutiny.

Adults should also be circumspect in their communications with children so as to avoid any possible misinterpretation of their motives. They should not give their personal contact details to children and young people including e-mail, home or mobile telephone numbers, unless the need to do so is agreed with senior management and parents/carers. E-mail or text communications between an adult and a child or young person outside agreed protocols may lead to disciplinary and/or criminal investigations. This also includes communications through web sites.

Communication with Parents

At Nightingale we promote regular and open communication between teachers and the families of the children they teach. We encourage all teachers to spend time on the playground at the beginning and end of the day to build up a relationship of trust with parents and carers.

E-mail and telephone contact are also encouraged but these should be either through the use of staff e-mail addresses or via telephone on the school's main number. Staff should never give their personal contact details to any parent.

In circumstances where staff have an existing friendship with a parent of a child at the school this relationship should be open and transparent. If in doubt it is best to make your line manager aware that you know a family in a social capacity.

Physical Contact

Many jobs within Nightingale require physical contact with children as part of the role. There are also occasions when it is entirely appropriate for other adults to have some physical contact with the child or young person with whom they are working. However, it is crucial that in all circumstances, adults should only touch children in ways which are appropriate to their professional or agreed role and responsibilities.

When physical contact is made with a child this should be in response to their needs at the time, of limited duration and appropriate to their age, stage of development, gender, ethnicity and background. It is not possible to be specific about the appropriateness of each physical contact, since an action that is appropriate with one child in one set of circumstances may be inappropriate in another, or with a different child. Adults, nevertheless, should use their professional judgement at all times, observe and take note of the child's reaction or feelings and – so far as is possible - use a level of contact and/or form of communication which is acceptable to the child for the minimum time necessary.

Physical contact which occurs regularly with an individual child or young person is likely to raise questions unless there is explicit agreement on the need for, and nature of, that contact. This would then be part of a formally agreed plan or within the parameters of established, agreed and legal professional protocols on physical contact e.g. sport activities or medical procedures. Any such arrangements should be understood and agreed by all concerned, justified in terms of the child's needs, consistently applied and open to scrutiny.

Physical contact should never be secretive, or for the gratification of the adult, or represent a misuse of authority. If an adult believes that their action could be misinterpreted, or if an action is observed by another as being inappropriate or possibly abusive, the incident and circumstances should be reported to the senior manager outlined in the procedures for handling allegations and an appropriate record made. Parents/carers should also be informed in such circumstances.

Where a child seeks or initiates inappropriate physical contact with an adult, the situation should be handled sensitively and care taken to ensure that contact is not exploited in any way. Careful consideration must be given to the needs of the child and advice and support given to the adult concerned.

It is recognised that some children who have experienced abuse may seek inappropriate physical contact. Adults should be particularly aware of this when it is known that a child has suffered previous abuse or neglect. In the child's view, physical contact might be associated with such experiences and lead to some actions being misinterpreted. In all circumstances where a child or young person initiates inappropriate physical contact, it is the responsibility of the adult to sensitively deter the child and help them understand the importance of personal boundaries. Such circumstances must always be reported and discussed with a senior manager and the parent/carer.

Other Activities Requiring Physical Contact

Adults who work in certain settings, for example sports, drama or outdoor activities will have to initiate some physical contact with children, for example to demonstrate technique in the use of a particular piece of equipment, adjust posture, or perhaps to support a child so they can perform an activity safely or prevent injury.

Physical contact should take place only when it is necessary in relation to a particular activity. It should take place in a safe and open environment i.e. one easily observed by others and last for the minimum time necessary. The extent of the contact should be made clear to the parent/carer and once agreed, should be undertaken with the permission of the child/young person. Contact should be relevant to their age or understanding and adults should remain sensitive to any discomfort expressed verbally or non-verbally by the child.

Guidance and protocols around safe and appropriate physical contact are provided by national organisations, for example sports governing bodies or major arts organisations, or guidance may be sought from any member of the Senior Leadership Team. This should be understood and applied consistently. Any incidents of physical contact that cause concern or fall outside of these protocols and guidance should be reported to a senior manager and parent or carer.

It is good practice if all parties clearly understand at the outset, what physical contact is necessary and appropriate in undertaking specific activities. Keeping parents/carers, children and young people informed of the extent and nature of any physical contact may also prevent allegations of misconduct or abuse arising.

Social Contact

Adults who work with children and young people should not seek to have social contact with them or their families, unless the reason for this contact has been firmly established and agreed with a member of the Senior Leadership Team. If a child or parent seeks to establish social contact, or if this occurs coincidentally, the adult should exercise her/his professional judgement in making a response but should always discuss the situation with their line manager or with the parent of the child or young person. Adults should be aware that social contact in certain situations can be misconstrued as grooming.

Where social contact is an integral part of work duties, e.g. pastoral work in the community, care should be taken to maintain appropriate personal and professional boundaries. This also applies to social contacts made through interests outside of work or through the adult's own family or personal networks.

It is recognised that some adults may support a parent who may be in particular difficulty. Care needs to be exercised in those situations where the parent comes to depend upon the adult for support outside their professional role. This situation should be discussed with senior management and where necessary referrals made to the appropriate support agency.

Sexual Contact

All adults should clearly understand the need to maintain appropriate boundaries in their contacts with children and young people. Intimate or sexual relationships between children/young people and the adults who work with them will be regarded as a grave breach of trust. Allowing or encouraging a relationship to develop in a way which might lead to a sexual relationship is also unacceptable.

Any sexual activity between an adult and the child or young person with whom they work will be regarded as a criminal offence and will always be a matter for disciplinary action.

Children and young people are protected by specific legal provisions regardless of whether the child or young person consents or not. The sexual activity referred to does not just involve physical contact including penetrative and non-penetrative acts. It may also include non-contact activities, such as causing children to engage in or watch sexual activity or the production of pornographic material. Sexual abuse can be defined as "forcing or enticing a child or young person to take part in sexual activities, whether or not the child is aware of what is happening".

There are occasions when adults embark on a course of behaviour known as 'grooming' where the sole purpose is to gain the trust of a child, and manipulate that relationship so sexual abuse can take place. Adults should be aware that consistently conferring inappropriate special attention and favour upon a child might be construed as being part of a 'grooming' process and as such will give rise to concerns about their behaviour.

One to One Situations

One to one situations have the potential to make a child/young person more vulnerable to harm by those who seek to exploit their position of trust. Adults working in one to one settings with children and young people may also be more vulnerable to unjust or unfounded allegations being made against them. Both possibilities should be recognised so that when one to one situations are required either in school or during home visits reasonable and sensible precautions are taken. All one to one working arrangements must be transparent and visible, for example through ensuring that doors are left open where possible, or having a glass panel in the door. It should be expected that Senior Managers will regularly check on long term one to one work and will be a visible presence

around the school at all times.

There are occasions where managers will need to undertake a risk assessment in relation to the specific nature and implications of one to one work, for example where a pupil is known to have particular vulnerabilities due to their behaviour or conduct. These assessments should take into account the individual needs of the child/young person and the individual worker and any arrangements should be reviewed on a regular basis. Where this is the case you will be made aware by a member of the Senior Leadership Team.

Meetings with children and young people outside agreed working arrangements should not take place without the agreement of the Senior Leadership Team and parents or carers. This includes any private coaching, tutoring or childcare with any child from our school.

Behaviour Management

All children and young people have a right to be treated with respect and dignity even in those circumstances where they display difficult or challenging behaviour.

Adults should not use any form of degrading treatment to punish a child. The use of sarcasm, demeaning or insensitive comments towards children and young people is not acceptable in any situation. Any sanctions or rewards used should be part of Nightingale's Behaviour Management Policy.

The use of physical punishment is not acceptable and whilst there may be a legal defence for parents who physically chastise their children, this does not extend, in any circumstances, to those adults who work with or on behalf of children and young people.

Where children display difficult or challenging behaviour, adults must follow the behaviour policy outlined by Nightingale, and use strategies appropriate to the circumstance and situation. The use of physical intervention or restraint can only be justified in exceptional circumstances and in line with the school's Use of Reasonable Force Policy.

Where a child has specific needs in respect of particularly challenging behaviour, a positive handling plan may be drawn up and agreed by all parties. Only in these circumstances should an adult deviate from the behaviour management policy of the organisation.

Use of Control and Physical Intervention

More detailed information about the use of control and physical intervention can be found in Nightingale's Use of Reasonable Force Policy and all staff should ensure that they have a sound knowledge of that document. However, the use of physical intervention should, wherever possible, be avoided. The Education and Inspection Act 2006 cites the use of reasonable force in the circumstances to prevent a pupil doing or continuing to do any of the following:-

- Committing any offence (or, for a pupil under the age of criminal responsibility, what would be an offence for an older pupil).
- Causing personal injury to any person (including the pupil themselves).
- Causing damage to the property of any person (including the pupil themselves) or school property.

- Prejudicing the maintenance of good order and discipline at the school and among any pupils receiving education at the school, whether during a teaching session or otherwise.

When physical intervention is used it should be undertaken in such a way that maintains the safety and dignity of all concerned.

The scale and nature of any physical intervention must be proportionate to both the behaviour of the individual to be controlled and the nature of the harm they may cause. The minimum necessary force should be used and the techniques deployed in line with recommended policy and practice. Under no circumstances should physical force or intervention be used as a form of punishment. The duty of care which applies to all adults and organisations working with children and young people requires that reasonable measures are taken to prevent children being harmed. The use of unwarranted physical force is likely to constitute a criminal offence.

In settings where restrictive physical interventions may need to be employed regularly, i.e. where adults are working with children with extreme behaviours associated with learning disability or autistic spectrum disorders, the school has a policy on the use of such intervention, as part of a wider behaviour management policy. Individual care plans, drawn up in consultation with parents/carers and, where appropriate, the child, will set out the strategies and techniques to be used and those which should be avoided. Risk assessments will be carried out where it is foreseeable that restrictive physical intervention may be required.

In all cases where physical intervention is employed the incident and subsequent actions should be documented and reported. This should include written and signed accounts of all those involved, including the child or young person. The parents/carers should be informed the same day.

Educational Visits and After School Activities

Adults should take particular care when supervising children and young people on trips and outings, where the setting is less formal than the usual workplace. Adults remain in a position of trust and need to ensure that their behaviour remains professional at all times and stays within clearly defined professional boundaries.

Where activities include overnight stays, careful consideration needs to be given to sleeping arrangements. Children, young people, adults and parents should be informed of these prior to the start of the trip. In all circumstances, those organising trips and outings must pay careful attention to ensuring safe staff/child ratios and to the gender mix of staff especially on overnight stays.

Health and Safety arrangements require members of staff to keep colleagues/employers aware of their whereabouts, especially when involved in activities outside the usual workplace.

Transporting Pupils

There may be a few occasions when adults are expected or asked to transport children as part of their duties. Adults, who are expected to use their own vehicles for transporting children should ensure that the vehicle is roadworthy, appropriately insured and that the maximum capacity is not exceeded. The child should never be alone in the vehicle with a single adult and wherever possible parental consent must be sought.

In any vehicle it is a legal requirement that all passengers should wear seat belts and it is the responsibility of the staff member to ensure that this requirement is met. Adults should also be aware of current legislation and adhere to the use of car seats for younger children. Where adults transport children in a vehicle which requires a specialist license/insurance e.g. PCV or LGV¹- staff should ensure that they have an appropriate licence and insurance to drive such a vehicle.

It is inappropriate for adults to offer lifts to a child or young person outside their normal working duties, unless this has been brought to the attention of the line manager and has been agreed with the parents/carers.

¹ For further information see www.dvla.gov.uk

There may be occasions where the child or young person requires transport in an emergency situation or where not to give a lift may place a child at risk. Such circumstances must always be recorded and reported to a senior manager and parents/carers.

Home Visits

There are members of staff for whom home visits are an integral part of their work. In these circumstances it is essential that appropriate policies and related risk assessments are in place to safeguard children and young people and the adults who work with them.

A risk assessment should include an evaluation of any known factors regarding the child/young person, parents and others living in the household. Risk factors such as hostility, child protection concerns, complaints or grievances can make adults more vulnerable to an allegation. Specific consideration should be given to visits outside of 'office hours' or in remote or secluded locations. Following an assessment, appropriate risk management measures should be in place before visits are agreed. Where little or no information is available, visits should not be made alone. There will be occasions where risk assessments are not possible or not available, e.g. when emergency services are used. In these circumstances, a record must always be made of the circumstances and outcome of the home visit. Such records must always be available for scrutiny.

Under no circumstances should an adult visit a child in their home outside agreed work arrangements or invite a child to their own home or that of a family member, colleague or friend. If in an emergency, such a one-off arrangement is required, the adult must have a prior discussion with a senior manager and the parents or carers and a clear justification for such arrangement is agreed and recorded.

The Use of Personal Living Space

No child or young person should be in or invited into the home of an adult who works with them, unless the reason for this has been firmly established and agreed with parents/ carers and a member of the Senior Leadership Team.

Under no circumstances should children or young people assist with chores or tasks in the home of an adult who works with them. Neither should they be asked to do so by friends or family of that adult.

Gifts, Rewards and Favouritism

The giving of gifts or rewards to children should be part of an agreed classroom or school routine for supporting positive behaviour or recognising particular achievements. In some situations, the giving of gifts as rewards may be accepted practice for a group of children, whilst in other situations the giving of a gift to an individual child will be part of an agreed plan, recorded and discussed with the member of the Senior Leadership Team responsible for the year group and the parent or carer.

It is acknowledged that there are specific occasions when adults may wish to give a child or young person a personal gift. This is only acceptable practice where, in line with the agreed policy, the adult has first discussed the giving of the gift and the reason for it, with the senior manager and/or parent or carer and the action is recorded. Any gifts should be given openly and not be based on favouritism. Adults need to be aware however, that the giving of gifts can be misinterpreted by others as a gesture either to bribe or groom a young person.

Adults should exercise care when selecting children and/or young people for specific activities or privileges to avoid perceptions of favouritism or unfairness. Methods and criteria for selection should always be transparent and open to scrutiny.

Care should also be taken to ensure that adults do not accept any gift that might be construed as a bribe by others, or lead the giver to expect preferential treatment.

There are occasions when children, young people or parents wish to pass small tokens of appreciation to adults e.g. on special occasions or as a thank-you and this is acceptable. However, it is unacceptable to receive gifts on a regular basis or of any significant value. If in doubt please discuss gifts that you have received with a member of the Senior Leadership Team.

Access to Inappropriate Images and Internet Usage

There are no circumstances that will justify adults possessing indecent images of children. Adults who access and possess links to such websites will be viewed as a significant and potential threat to children. Accessing, making and storing indecent images of children on the internet is illegal. This will lead to criminal investigation and the individual being barred from working with children and young people, if proven.

Adults should not use equipment belonging to the school to access adult pornography; neither should personal equipment containing these images or links to them be brought into the workplace. This will raise serious concerns about the suitability of the adult to continue to work with children. Adults should ensure that children and young people are not exposed to any inappropriate images or web links.

Where indecent images of children or other unsuitable material are found, the police and Local Authority Designated Officer (LADO) will be immediately informed. Adults should not attempt to investigate the matter or evaluate the material themselves, as this may lead to evidence being contaminated which in itself can lead to a criminal prosecution. Any such incident should be reported to the Headteacher immediately.

Photography and Videos

Working with children and young people may involve the taking or recording of images. Any such work should take place with due regard to the law and the need to safeguard the privacy, dignity, safety and well-being of children and young people. Informed written consent from parents or carers will have been sought when the child joined Nightingale and records of this should be held by the teacher and consulted before any images are shared beyond the school community, for example on the school website. Agreement, where possible, from the child or young person, should always be sought before an image is taken for any purpose.

Careful consideration should be given as to how activities involving the taking of images are organised and undertaken. Care should be taken to ensure that all parties understand the implications of the image being taken especially if it is to be used for any publicity purposes or published in the media, or on the Internet. Any images taken should either be deleted after their use or stored on the Nightingale server in an open-access folder.

Adults need to remain sensitive to any children who appear uncomfortable, for whatever reason, and should recognise the potential for such activities to raise concerns or lead to misunderstandings.

It is not appropriate for adults to take photographs of children for their personal use.

Personal ICT equipment (including phones) brought onto the School Premises

Personal ICT equipment brought in to school may only be used in classrooms with the specific agreement of the Headteacher and in most cases equivalent school equipment will be offered as an alternative. The use of personal equipment to take photographs of pupils (including cameras) is strictly prohibited.

Mobile phones should only be used during break and lunchtimes for personal communication. An exception to this is the phone carried by members of the Senior Leadership Team so that they may be contacted at any time.

Confidentiality

Adults may have access to confidential information about children and young people in order to undertake their responsibilities. In some circumstances they may have access to or be given highly sensitive or private information. These details must be kept confidential at all times and only shared when it is in interests of the child to do so. Such information must not be used to intimidate, humiliate, or embarrass the child or young person concerned.

If an adult who works with children is in any doubt about whether to share information or keep it confidential he or she should seek guidance from a senior member of staff or Designated Child Protection lead.

Whilst adults need to be aware of the need to listen to and support children and young people, they must also understand the importance of not promising to keep secrets. Neither should they request this of a child young person under any circumstances.

Additionally, concerns and allegations about adults should be treated as confidential and passed to a senior manager without delay.

Appendix 6 – Positive Handling Policy

Positive handling should be limited to emergency situations and used only in the last resort. Under the Children Order 1995, it is only permissible as described under the heading "Physical Control". Article 4 of the Education Order 1998 clarifies powers that already exist in common law. It enables trained staff in the school, authorised by the Headteacher, to use such force as is reasonable in the circumstances, to prevent a pupil from:

- Committing an offence
- Causing personal injury to, or damage to the property of, any person (including the pupil themselves). This includes any situation where pupils are fighting

2:1 Definition of Positive Handling at Nightingale Primary School

Positive handling is the positive application of force with the intention of protecting the child from harming himself or others or seriously damaging property.

2:2 General Policy Aims

Staff at Nightingale Primary School recognise that the use of reasonable force is only one of the last in a range of strategies available to secure pupil safety / well-being and also to maintain good order and discipline. Our policy on positive handling should therefore be read in conjunction with our Behaviour Policy.

2:3 Specific Aims of the Positive Handling Policy

- To protect every person in the school community from harm.
- To protect all pupils against any form of physical intervention which is unnecessary, inappropriate, excessive or harmful.
- To provide adequate information and training for staff so that they are clear as to what constitutes appropriate behaviour and to deal effectively with violent or potentially violent situations.

3. Why Use Positive Handling?

Positive handling should avert danger by preventing or deflecting a child's action or perhaps by removing a physical object, which could be used to harm him / herself or others. It is only likely to be needed if a child appears to be unable to exercise selfcontrol of emotions and behaviour.

It is not possible to define every circumstance in which positive handling would be necessary or appropriate and staff will have to exercise their own judgement in situations which arise within the above categories. Staff should always act within the School's policy on behaviour and discipline, particularly in dealing with disruptive behaviour. Staff should be aware that when they are in charge of children during the school day, or during other supervised activities, they are acting in loco parentis and should, therefore, take reasonable action to ensure pupils' safety and well-being.

Failure to positively handle a pupil who is subsequently injured or injures another, could, in certain circumstances, lead to an accusation of negligence. At the same time staff are not expected to place themselves in situations where they are likely to suffer injury as a result of their intervention.

3.1 Alternative Strategies

There are some situations in which the need for positive handling is immediate and where there are no equally effective alternatives (eg is a pupil is about to run across a road). However, in many circumstances there are alternatives e.g. use of assertiveness skills such as:

- Use of a distracter, such as a loud whistle, to interrupt the behaviour (such as a fight) long enough for other methods of verbal control to be effective
- Withdrawal of attention (audience) e.g. if an action such as damage to property is threatened
- Other techniques designed to defuse the situation, such as reminders of zones of regulation and distraction

3.3 Use of Positive Handling

Positive handling should be applied as an act of care and control with the intention of re-establishing verbal control as soon as possible and, at the same time, allowing the pupil to regain self-control. It should never take a form which could be seen as a punishment.

Named staff are only authorised to use reasonable force in applying positive handling, although there is no absolute definition of this, as what constitutes reasonable force depends upon the particular situation and the pupil to whom it is being applied. However, as a general rule, only the force necessary to stop or prevent the behaviour should be used, in accordance with the guidelines below. There are some forms of physical intervention, which may involve minimal physical contact, such as blocking a pupil's path or the staff member physically interposing him or herself between the pupil and another pupil or object. However, in some circumstances, direct physical contact may be necessary.

In all circumstances other methods should be used if appropriate or effective positive handling should be a last resort. When positive handling becomes necessary:

DO

- Tell the pupil what you are doing and why
- Support colleagues using the 'I'm here to help' phrase
- Use the minimum force necessary
- Involve another member of staff if possible
- Tell the pupil what s/he must do for you to remove the restraint (this may need frequent repetition)
- Use simple and clear language
- Hold limbs above a major joint if possible e.g. above the elbow
- Relax your restraint in response to the pupil's compliance

DON'T

- Act in temper (involve another staff member if you fear loss of control)
- Involve yourself in a prolonged verbal exchange with the pupil
- Attempt to reason with the pupil
- Involve other pupils in the restraint
- Twist or force limbs back against a joint
- Hold the pupil in a way which will restrict blood flow or breathing e.g. around the neck

3.4 Actions After An Incident

Positive handling often occurs in response to highly charged emotional situations and there is a clear need for debriefing after the incident, both for the staff involved and the pupil. A member of the leadership team should be informed of any incident as soon as possible and will take responsibility for making arrangements for debriefing once the situation has stabilised. An appropriate member of the teaching staff should always be involved in debriefing the pupil involved and any victims of the incident should be offered support, and their parents informed. If the behaviour is part of an ongoing pattern it may be necessary to address the situation through the development of a behavioural IEP, which may include an anger management programme, or other strategies agreed by the SENCO.

It is also helpful to consider the circumstances precipitating the incident to explore ways in which future incidents can be avoided.

All incidents should be recorded immediately. All sections of this report should be completed so that in the event of any future complaint a full record is available. A member of the leadership team will contact parents as soon as possible after an incident, normally on the same day, to inform them of the actions that were taken and why, and to provide them with an opportunity to discuss it.

4 Risk Assessments

If we become aware that a pupil is likely to behave in a disruptive way that may require the use of reasonable force, we will plan how to respond if the situation arises. Such planning will address:

- Management of the pupil (e.g. reactive strategies to de-escalate a conflict, holds to be used if necessary)
- Involvement of parents to ensure that they are clear about the specific action the school might need to take
- Briefing of staff to ensure they know exactly what action they should be taking (this may identify a need for training or guidance)
- Identification of additional support that can be called upon, for example the Re-Engagement Unit

5 Complaints

A clear positive handling policy, adhered to by all staff and shared with parents, should help to avoid complaints from parents. It is unlikely to prevent all complaints, however, and a dispute about the use of force by a member of staff might lead to an investigation, either under disciplinary procedures or by the Police and social services department under child protection procedures. It is our intention to inform all staff, pupils, parents and governors about these procedures and the context in which they apply.

We will review this policy appendix annually